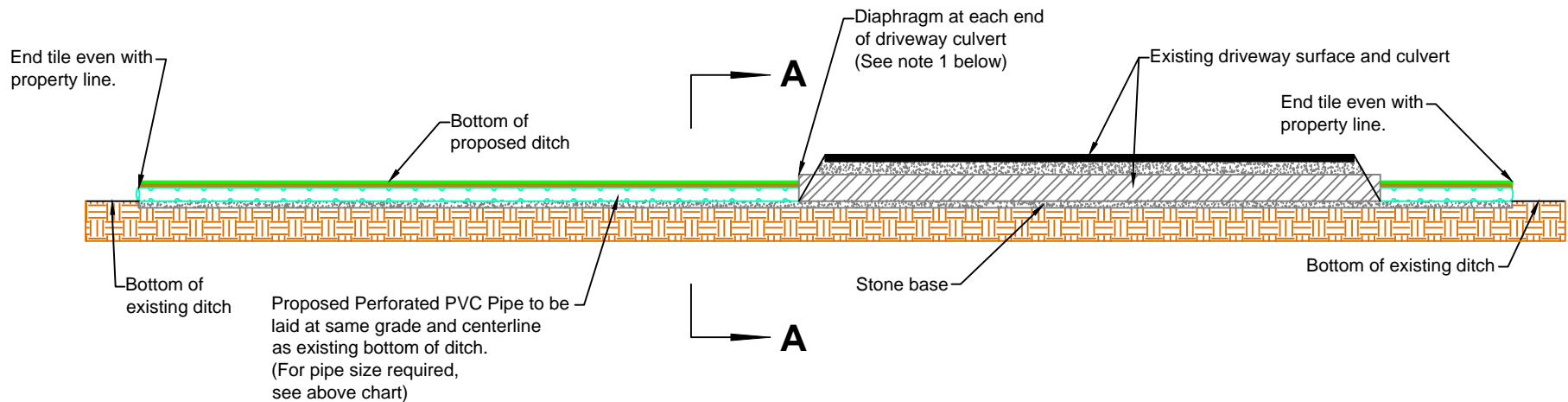


PROPOSED DRAINTILE SIZE REGULATIONS	
EXISTING CULVERT UNDER DRIVEWAY	REQUIRED SIZE PARKWAY PIPE
12" DIA.	6" DIA.
15" DIA.	8" DIA.
18" DIA.	10" DIA.
21" DIA.	10" DIA.
24" DIA.	12" DIA.



NOTES:

1. If house sump pump discharges into ditch, provide tee at discharge point to ditch. Provide roofing felt strip, 3" wide x pipe diameter over top of each joint. Place 2" board diaphragm, where tile meets culvert, to retain fill.
2. Use Perforated PVC Pipe for ditch pipe.

EXHIBIT B