

Volume 8, Number 5

October, 1983

BLOOMINGDALE PUBLIC LIBRARY

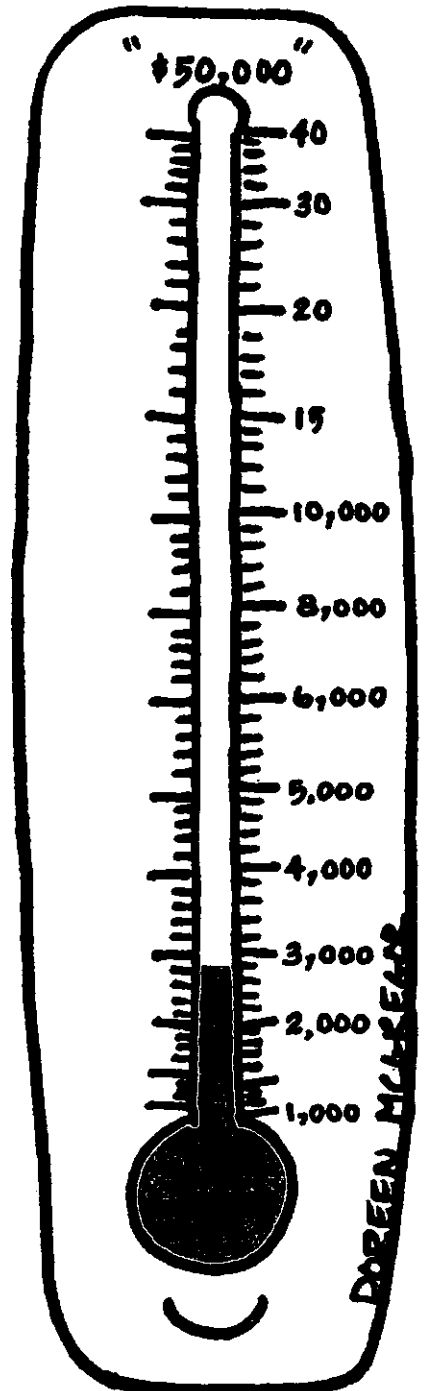
BUILDING A LEGACY

Throughout 1983 we have been celebrating the 150th birthday of Bloomingdale. The special events held to date have proven to be tremendous successes. In addition, a Landmark Gazebo commemorating our Sesquicentennial celebration will be constructed on the old library site. The construction costs are estimated to be \$50,000. Currently the Village has been requesting contributions from businesses patronized by Village residents. Contributors of sums in excess of \$200 will have their names placed on a bronze plaque to be displayed at the center of the gazebo.



Residents are welcome to make a donation in any amount to help build this legacy commemorating our Sesquicentennial. Checks should be made payable to "Village of Bloomingdale." Any contribution is tax deductible. The Almanac will be keeping track of our progress toward the goal of \$50,000. In the last two months the following contributions have been made:

Westlake Townhome Owners Association (Social Committee)	\$50.00
Cotton-Kean Ford (Carol Stream)	\$200.00
Fenci-Tufo Chevrolet, Inc. (Glendale Heights)	\$200.00
Urban Investment & Development Co.	\$1500.00



Samuel J. Tenuto
VILLAGE PRESIDENT
Marie E. Tayfel
VILLAGE CLERK
Robert F. Reeves
VILLAGE ADMINISTRATOR

TRUSTEES

Biff Behr
Finance & Budget,
Finance Commission, Park District
Walter Cropper III
Police, Health & Safety, E.S.D.A.,
Police Pension Board,
Board of Fire & Police Commissioners
RTA Services
Joanne Hildt
Old Town/Public Works,
Old Town Commission,
Public Relations Committee,
Chamber of Commerce,
Community Development Commission
William Horvath
Public Works, DuPage Water Commission
Regionalization Committee
Robert Iden
Plan Commission, Architectural Review,
Comprehensive Planning Committee,
Cable TV
James LeBurkien
Zoning, Building & Street Maintenance,
Library Board,
Suburban O'Hare Commission

BRANCH PICKUP

Residents are reminded that our Monday branch pick-up program ended on October 3. During the month of October, we will begin readying our trucks for the winter season. Notice of our Spring starting date will appear in the April, 1984 issue.

NOTICE

A concentration of barium in the drinking water of the Village of Bloomingdale presently exceeds the 1.0 mg/1 allowable concentration set by the Illinois Environmental Protection Agency. The Village, on April 29, 1982, received from the Illinois Pollution Control Board, a Variance from the barium standards which is valid until January 1, 1984. The average content of barium in water produced by Well No. 8, is 2.8 mg/1. There is no evidence that this concentration presents a threat to the health of water consumers.

VILLAGE BOARD & COMMISSION MEETINGS

The public is encouraged to attend all Board & Commission meetings.

REGULAR MEETINGS OF THE VILLAGE BOARD

2nd and 4th Monday of every Month
7:30 P.M. — Village Hall

COMMITTEE OF THE WHOLE

1st and 4th Monday of every Month
7:30 P.M. — Village Hall

PLAN COMMISSION

1st and 3rd Tuesday of every Month
8:00 P.M. — Village Hall

BOARD OF FIRE AND POLICE COMMISSIONERS

3rd Thursday of Every Month
7:00 P.M. — Village Hall

POLICE PENSION BOARD

Quarterly beginning in January
2nd Monday,
7:00 P.M. — Village Hall

FINANCE COMMISSION

1st and 3rd Wednesday of every Month
7:30 P.M. — Village Hall

OLD TOWN COMMISSION

3rd Wednesday of every Month
8:00 P.M. — Village Hall

LIBRARY BOARD OF DIRECTORS

3rd Wednesday of every Month
7:30 P.M. — Library

THE DEADLINE FOR THE DECEMBER ISSUE IS NOVEMBER 20

VILLAGE ALMANAC is published bi-monthly by The Public Relations Committee of the Village of Bloomingdale.
Editor,
Mary Ellen Johnson - 351-1503
Production Assistants
Don Lively

Address all correspondence to:
Village of Bloomingdale
Public Relations Committee
201 S. Bloomingdale Road
Bloomingdale, IL 60108
Phone: 893-7000

SCHIRA NAMED ACTING CHIEF

Sergeant Gary J. Schira was first appointed as a Bloomingdale Policeman on September 13, 1972 and was appointed Acting Police Chief on September 26, 1983. This action follows the resignation of Patrick J. McMahon who is following career pursuits.

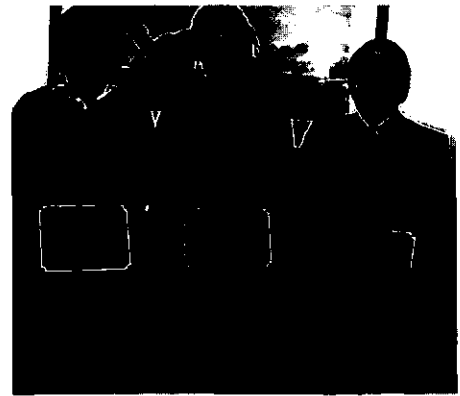
Acting, Chief Schira was appointed Sergeant on August 1, 1976 and has been serving as Commander of Operational Services since May 1, 1981.

Gary has resided in Bloomingdale with his wife Mariann and two children for seven years.

CORRECTION

In the June issue we reported on the rededication of a bronze plaque dedicated to the two Bloomingdale residents who lost their lives in World War II. One of these heroic men is Alvin Koehn. We apologize to the Koehn family for the previous mistake in his name.

Heroes Honored



Karl Krause, Paul Krause Jr. and Lawrence McKenna, all of Roselle, display plaques awarded them by the Village Board for their heroic action in bringing a motorist and his passenger to safety after their auto went into the Springbrook retention pond. Also honored, but not present were Michael Sexton of Roselle and Edward Hadhazy of Bartlett.

TAKE A CHANCE

The last Sesquicentennial event of the year is a raffle for the benefit of the Founders' Park Gazebo to be built on the old library site. Tickets are \$25.00 and tax deductible. The prizes are:

First Prize	\$5000.00
Second Prize	\$1000.00
Third Prize	\$500.00

The number of tickets to be sold is limited to 1000 and 200 have already been sold.

Tickets may be purchased at the Village Hall, Paul Paoletti's, Bloomingdale State Bank and other participating merchants, or by calling 529-8908 or 529-4047.

The drawing will be held Saturday, October 22, 1983 at 8:00 P.M. at the Glendale Country Club. Help make this last event a success by buying a ticket.

POST NO BILLS

The Police Department would like to remind residents that there is an ordinance covering the posting of signs in the Village limits. Bills, political posters and any type of advertisements (including garage sale signs), may be only posted on private property with the owner's permission. Signs may not be posted on utility poles, parkways or any other public property. The residents' cooperation with this ordinance, #69-11, is greatly appreciated.

BOARD ACTIONS

The following ordinances are among those passed by the Village Board recently:

- Ord. No. 83-20 An ordinance authorizing the execution of a parking and traffic control agreement for the property commonly known as Indian Lakes Resort.
- Ord. No. 83-28 An ordinance amending the zoning ordinance of the Village of Bloomingdale by establishing an Old Town Preservation zoning classification.
- Ord. No. 83-30 An ordinance authorizing the execution of a parking and traffic control agreement for the property commonly referred to as Springbrook Shopping Center.

Bloomingdale/Roselle Widening

As previously reported, the Villages of Bloomingdale and Roselle, in cooperation with DuPage County is in the process of final plan preparation and acquisition of right-of-way or easements. Progress has been hindered somewhat by extensive drainage considerations along the road near Bryn Mawr Avenue. We expect that final plans will be finished by the end of 1983, with construction beginning in the Spring of 1984. The exact schedule will be determined by the land acquisition process.

CABLE TELEVISION PROGRESS

Since June, 1983, the installation of underground main cable has been underway and is now nearly completed in our Village. At present, crews are installing service drops to residences where permission has been granted to do so. Overhead wiring in areas where telephone and electric lines are on poles is now beginning in the Bloomingdale area. At this time, we anticipate that some areas will have services prior to the end of 1983, but we do not know specifically which areas will be first.

RTA ANNOUNCEMENT

RTA ROUTE 407 6:35 A.M. TRIP TO BE ADJUSTED

The running time on RTA Route 407 - Bloomingdale-Roselle Feeder 6:35 a.m. trip to the NIRC/Milwaukee Road Station in Roselle is being adjusted to better accommodate commuters, the Regional Transportation Authority announced, effective Tuesday, September 6.

Those commuters who ride the Route 407 bus leaving Bloomingdale/Greenway at 6:35 a.m. will reach the NIRC/Milwaukee Road station approximately 10 minutes earlier depending on travel conditions. This change will enable them to arrive in time to board either the 7:08 a.m. or the 7:13 a.m. east-bound trains. Prior to the adjustment, the 6:35 a.m. bus arrived at the station in time for the 7:21 a.m. Chicago bound train. Scheduled time of arrival at the station for buses leaving Bloomingdale/Greenway at 6:00 a.m. and 7:30 a.m., remain the same. The 6:35 a.m. bus from Bloomingdale/Greenway at 6:00 a.m. and 7:30 a.m., remain the same. The 6:35 a.m. bus from Bloomingdale/Greenway stops at Winston/Fairfield at 6:43 a.m., Schick/Fairfield at 6:46 a.m., and Bryn Mawr/Lake at 6:52 a.m.

New schedules will be available on the RTA Route 407 buses, at the NIRC/Milwaukee Road Station in Roselle, and through the RTA Travel Information Center, 1-800-972-7000 toll-free from the suburbs. Further information concerning this service or other RTA carriers operating within the six-county region may be obtained by calling the Travel Center as well.



PROPOSED TAX RATE INCREASE FOR DISTRICT #13

Bloomington's School District #13 will seek permission from voters to increase its Education Fund tax rate by sixty cents per one hundred dollars assessed valuation next year.

Brandt Crocker, Superintendent, said "School financing is not always easy for the public to understand. What we are asking for is an increase in the tax rate for the Education Fund. This is the fund which pays direct teaching costs. It provides for teachers, aides, secretaries and administrators. It also covers the textbooks, supplies, achievement testing and other things which are used in the instruction of students.

"The Education Fund makes up 70% of our total budget. And we cannot simply take money from other funds to add to the Education Fund. The main reason for this is that Illinois law is very specific about how each fund is used. Transportation Fund Money, for instance, cannot be used for any other purpose. Neither can categorical state aid for special education, gifted education or vocational education be used for other purposes. Special education may cost as much as \$10,000 per student.

"Of course, the biggest expenditure from the Education Fund is for the salaries of teachers. We consider ourselves very fortunate to have a staff that is working with us to help resolve our financial problems. Unlike some other districts, our employees have not chosen to strike for higher wages, although theirs are the lowest in the Lake Park area. Instead, they feel that the students' needs should come first, so they are in the classrooms.

"There is simply no way we can raise our teachers' salaries to an adequate level without the tax increase we seek. Indeed, should the tax increase not pass, we will be forced to make massive personnel cuts, and that would certainly hurt the students and damage the

quality of education in the community.

"The tax rate has not changed since 1968, and we all know what has happened to the cost of living in that time. It has increased by 193%.

"While the state is demanding more and more of the schools, they are supporting us less and less, which is contrary to the state constitution. The constitution establishes that the state provide at least fifty percent of the revenues for educating public school students. Since 1978-79, our district has lost over \$500,000 in state aid. This year's deficit of \$329,155 would virtually disappear if the state provided even half of the fifty percent funding they are supposed to pay. This year we received only 23% of our total budget from state funds."

Karen Gerovac, Board of Education president, stated that much of the \$130,000 cut from this year's budget was for supplies, textbooks and equipment. "We have taken many steps to cut costs. The vacancy in the assistant principalship at DuJardin School has not been filled. Instead, we have hired an intern from Loyola University and Assistant Superintendent Larry Erickson has been reassigned to spend half his time helping principals of Central and DuJardin Schools with teacher evaluation.

"We have cut energy costs in the past three years through a careful program of energy conservation for which we received a state award. But we cannot do without supplies and textbooks very long, and of course our buildings must be maintained, heated and lighted.

Gerovac stressed that the district does not anticipate using the full sixty cents immediately. She anticipates that about twenty to thirty cents will be needed next year. A thirty cent increase would add about four percent to homeowners' tax bills, or about \$40 per \$1000 in taxes

for the year. This amounts to \$3.33 per month.

Crocker pointed out that anyone who wishes to know more about the District's schools and their financial situation is welcome to call the district office at 893-9590. A slide show and speaker will be made available to groups. Because of the financial condition of the district, private funds are being solicited through the Keep Quality Schools Committee to finance the referendum's promotion.

The referendum will appear on the November 8 ballot, with school board candidates.

Six candidates have filed petitions for the four Board of Education seats in the November 8 election. They are: Lucille Harter, Beth Eimen, Michael D. Hovde, Lynne W. Denmark, James W. Korbecki and Carol Ahmed. Board terms are for four years.
Please vote!

SUPERINTENDENTS' FORUM

Parents of children in Public School District 13, 15, and 93 are invited to attend a Superintendents' Forum on Tuesday, October 18 at 7:00 p.m. at the Bloomington Public Library.

Superintendents Brandt Crocker (District 13), Lawrence Golden (District 15), and John Di Buono (District 93) will address major issues facing schools today.

A question and answer period will follow.

This program is co-sponsored by the Friends of the Bloomington Public Library and the Library. Sign up in person at 101 Fairfield Way, or call the Library at 529-3120.

CANDY DAY

On October 14, 1983 the Bloomingdale Lions Club will participate in Lions Candy Day activities according to Candy Day Chairman Jim Robertson. This annual event is the single largest fundraiser held by Illinois Lions each year with all proceeds used to help the blind and hearing impaired.

Two of the projects supported by your donations are the mobile glaucoma bus and the mobile hearing bus, each of which visits Bloomingdale on alternating years to provide free glaucoma and hearing tests to residents. This year the glaucoma bus was at Springbrook Shopping Center on October 11th. In addition, funds are used for leader dogs for the blind, Camp Lions for children with severe vision and hearing impairments and many other programs.

Lions Club members and volunteers will be soliciting your donations at street intersections throughout the Village, as well as at local banks and shopping centers. Members will also be visiting local businesses and merchants for donations to help underwrite the cost of the candy and other needed supplies.

Said Lion Jim, "The people in our community have been very generous with their donations in past years. We look forward to their continued support."

We are happy to announce that Dr. Clayton Crane, one of our Directory advertisers, has recovered from his recent emergency ball bladder operation and is once again seeing patients in his office at 201 E. Army Trail Road. We understand the entire episode was quite an ordeal and we're very glad the doctor is feeling fine.

Editor

TOOTSIE ROLL TIME

Once again leaves are falling, geese are calling and footballs are flying. But more importantly, it is time for the annual Knights of Columbus Mentally Retarded Drive. Yes, it's Tootsie Roll time again.

Last year the Thomas Merton Council set a goal of \$5000 and collected \$7400. After deducting expenses and contributing 10% to the state organization, the Council was able to give Marklund Home a check for \$4000. Statewide, the Knights exceeded \$1.1 million.

The goal this year is to do better than last year; help the Knights of Columbus to help those who cannot help themselves. Contributions are welcome from business people to help buy Tootsie Rolls. A box costs approximately \$10 and will normally gross about \$85 per box. What a return on investment! The Council can also use any volunteer help organizations may wish to offer. Anyone wishing to assist should please call Area Chairman Baiardo at 893-9386.

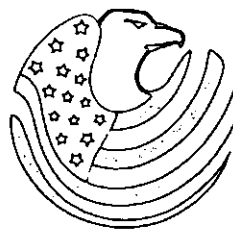
GIVE A PINT

As a resident of Bloomingdale your family is a member of the Bloomingdale Blood Association, which entitles you to full coverage under our community blood assurance plan. The Aurora Blood Bank will cover all families in Bloomingdale, including retired persons, whether or not they are donors. This includes all family members, related by blood or marriage, no matter where they live.

The next scheduled blood drive is Saturday, October 22, 1983 from 8 A.M. to 12 Noon at DuJardin School, 166 S. Euclid Avenue. These drives will also benefit the two hemophiliacs living in Bloomingdale.

If you are able to give blood, please attend the drive. So many people are unable to give and blood cannot be manufactured; it must come from donors. If you are unable to give blood, help is always needed at the drive or making phone calls before the drive.

Please support our community blood plan. For donor appointments call Maureen at 529-0429 or Barbara at 529-7548.



American Heritage Savings

YOUR FAMILY FINANCIAL CENTER



BLOOMINGDALE
261 W. Lake St.
894-5400



ADDISON
625 Army Trail Blvd.
543-5800
ADDISON II
68 W. Lake St.
Green Meadow
Shopping Center
628-1212
CAROL STREAM
850 W. Army Trail Rd.
830-4700
SCHAUMBURG
15 W. Weathersfield Way
893-4340
WOOD DALE
370 Georgetown Square
Georgetown Shopping
Center
594-4540

NEW BUSINESSES IN BLOOMINGDALE

This issue will feature three businesses all located in the "Old Town" area. The two new businesses will create "Pleasing Impressions" in decorating your home and give "The Crowning Touch" to your wardrobe. The third business is certainly not new to the Village, but we wanted to show you how "Magique" can transform you into a goblin.

PLEASING IMPRESSIONS

If you want to have your castle look like those professionally decorated display homes you've seen, but you don't want the cost, you may find the answer within the walls of a pink and white house located at 140 W. Lake Street. Sandra Bruno, owner of Pleasing Impressions, will use her nine years of experience to assist you in selecting the right pictures and accessories for your home.

By using the four rooms within the shop Sandy gives you the settings for children's rooms, kitchens, dens and formal dining/living rooms. In each room she uses her "magic walls" to create the wall grouping design just for you. One of the special types of accessories you will find are the hand-carved miniature figurines by Anri. The limited edition pieces depict children in various activities.

Custom curio cabinets and furniture accent pieces will also help you

achieve a unique decorating design for your home. The shop also offers "Shaker Style" pine and ash furniture. We are sure that when you enter this shop and see the selection of accessories, wall decor and furniture, you will easily see how the shop got its name - Pleasing Impressions.

THE CROWNING TOUCH LTD.

"A new look and a new you" is the theme for the Crowning Touch Ltd. another of the four shops at 140 W. Lake Street. This new business which opened October 1st, is another believer in Old Town's future.

Using her 20 years of experience, Adele Bohenek, the boutique's buyer, has selected lines of merchandise which offer style at very likeable prices. The shop features an assortment of wigs by Adolfo and Eva Gabor that look so natural they will "make heads trun." They also carry a beautiful selection of millinery ranging from \$24 to \$40. If you have not been able to find that special blouse, top or sweater needed to complete your wardrobe, a large selection in sizes 7 to 40 are available at affordable prices.

To accessorize your new clothes, you can choose from better costume earrings, bracelets and chains, as well as 14K gold chains and ear-

rings. An unusual item is the collection of handpainted face amulets made of porcelain that hang on a silk-satin cord. In addition, a selection of evening bags, cowhide and durable skin handbags are also available.

Ms. Bohenek invites you to come to her shop for the Crowning Touch to your wardrobe.

MAGIQUE

In front of the shop located at 159 West Lake Street the sign simply states: "Procrastination Gifts, Novelties, Magic and Halloween Costumes." However, the sign hardly prepares you for the huge assortment available. The selection is so large that it takes some people two hours to see the variety of gag gifts, novelty cards, comic towels, magic tricks and costumes. Many amateur and professional magicians shop this store for their supplies and tricks.

During this time of the year the majority of the shop is used to display Halloween costumes for kids of all ages. With the use of a rubber mask you can instantly be transformed into President Reagan, Yoda of Star Wars fame or anything your imagination can conjure up. In addition you can purchase or rent complete costumes for your Halloween party. Also available are decorations which can help you create a haunted house for your goblins.

Although John Bialek's Magique has been open since 1979, many of you may not know such a store existed. Once you visit the shop, we are sure you will never forget it.

ACE HARDWARE OPENS

Ace Hardware opened the doors to its largest home center in DuPage County on October 3, 1983. The 40,000 sq. ft. store at 140 E. Lake Street in Springbrook Shopping Center boasts many specialty departments including an extensive giftware department and a complete lumber department. The grand opening of the store is scheduled for October 26, 1983.

POSTAL SUBSTATION

Ruth's Hallmark, 148 E. Lake Street in the Springbrook Shopping Center, has recently signed a contract with the Post Office to become a postal substation. Residents may now purchase stamps and drop off first class mail at the shop. Bob Knill, of Ruth's Hallmark, says he hopes to have expanded postal services in the future.



BROOM BRIGADE

CHAMBER OF COMMERCE

Your home, office or store is the place of business for Broom Brigade. Although the specialty of this family owned and operated business is carpet cleaning, its services range from housecleaning and commercial janitorial to upholstery cleaning and furniture touch-up and repair.

The Novy Family combined individual resources of knowledge, talent and labor to make customer satisfaction the primary objective of Broom Brigade. For example, the Novy's chose a more time consuming method of carpet cleaning that will produce the best results for consumers. Dick Novy, who worked 33 years in the furniture refinishing and upholstery industries, stated that his need to feel a job is well done is what makes Broom Brigade notable.

Dick's wife, Bev, enjoys the creativity and challenge that comes with operating a new business. Her experience as a customer service manager developed an ability to empathize with consumers.

Whether you're managing a harried household, or a commercial enterprise, the owners of Broom Brigade assure you of a job well done.

The beauty and strength of Bloomington lies with our residents and local businesses. Because both businesses and residents (consumers) are very important to our community, the Chamber of Commerce was conceived two years ago. Our objective is to develop, encourage, promote and protect the commercial, professional, financial and general business interest in Bloomington.

The Chamber of Commerce is the place where opinions can be heard and issues affecting business growth can be discussed. Together business owners, professionals and residents can meet to suggest solutions toward resolving issues affecting the community.

The Chamber of Commerce Board meets the first Monday of every month at Indian Lakes Resort at 8:00 A.M. The meeting is open to the

public. On the third Thursday of the month the Chamber offers programs to residents and local businesses. Some of the past programs were: Economic Projection for the DuPage County area; Old Town and Its Importance to Bloomington; and Lake Michigan Pipeline - Its Impact on Taxes and Resources. Upcoming programs include: How To Shop For Christmas; Creative Advertising; and How To Save on Business and Personal Taxes. This month the Chamber is sponsoring a program on Security for Businesses and Residents on October 20th. (See separate article for details). It is advantageous to the Village of Bloomington and to all its merchants to promote and encourage local buying.

Robert Jay Burack
Chamber of Commerce Program
Director
Manager - Lustig Jewelers

THEFT: DON'T LET IT SCARE YOU

The Bloomington Chamber of Commerce will kick off its Fall/Winter evening presentations with a program focusing on commercial and residential security. Addressing the various methods and means available to combat theft will be: the Bloomington Police Department, Chicago Metro Alarm Company, AT&T Phone Center, New Concepts and Assoc. and Midwest Polygraph Co. (Polygraph Demonstration).

The presentation is scheduled for Thursday, October 20 at Indian Lakes Resort. The meeting will begin with hot and cold Hors D'oeuvres at 5:00 P.M. (Cash Bar). Presentation

will begin at 6:00 and conclude at 8:00.

Cost:
\$5.00 Members w/advance reservations
\$6.00 Non-Members w/advance reservations
\$7.00 At the Door

Call the Chamber at 980-9082 for reservations or Bob Burack of Lustig Jewelers at 351-8900 for participation or further information.

Keep in mind that Christmas not only brings joy to retailers and residents, but also thieves! Plan now to attend this meeting concerning a timely topic.

BLOOMINGTON MEDICAL CENTER
-division of Glen Ellyn Clinic, S.C.
177 S. Bloomington Rd.
Bloomington, IL 60108

Allergy	790-2550
Dermatology	790-2550
Internal Medicine	790-2550
Orthopaedics	790-2550
Gynecology/ Infertility	790-2550
Pediatrics	893-9100
Obstetrics/ Gynecology	858-3200

Lab and X-Ray facilities
also available.

Family Practice — The New Specialty

GUEST COLUMN

By Ashwin B. Damania, M.D., F.A.A.F.P.

We are instituting something new in this issue of the Almanac. This is a guest column in which various local professionals i.e. doctor, lawyer, dentist, accountant etc., will have an opportunity to share with residents some aspect of his/her profession which he/she feels will benefit the public. Any professional person practicing in the Village is invited to write a column. The topic and date of publication is at the editor's discretion. Any interested professional may contact Mary E. Johnson at the Village Hall, 893-7000 about being a columnist for an issue.

Dr. A.B. Damania is a family physician certified by the American Board of Family Practice. He is on staff at Glendale Heights Community Hospital and Central DuPage Hospital, and has a faculty appointment at Rush-Presbyterian St. Luke Medical Center. He has been practicing here in Bloomingdale for two and a half years.

Although Family Practice was formed as a specialty in 1969, it is still new for two reasons: 1) Most people do not know it exists; 2) It is relatively new in comparison to other specialties like pediatrics, obstetrics and gynecology and surgery.

To be certified as a specialist in family practice a family doctor must pass an intensive examination given by the specialty's certifying board, the American Board of Family Practice. He or she must also have completed a three-year residency. In addition, an American Board of Family Practice diplomate must be recertified every six years. Family Practice was the first specialty with this mandatory requirement.

The family physician is educated and trained in six broad areas of medicine: pediatrics, surgery, internal medicine, obstetrics & gynecology, psychiatry and community medicine. This qualifies the physician to provide continuing comprehensive health maintenance and medical care to the entire family regardless of age, sex or type of problem — biological, behavioral or social.

Continuity of care is a most important element of the family physician's training and practice. This means that your family physician is always your doctor. Even when prescribing consultation with another specialist, they never relinquish full responsibility for supervision of your health.

The family physician learns not only to make you well, but how to keep you healthy.

* Definitions taken from the American Academy of Family Physicians.

Dr. A.B. Damania • 201 E. Army Trail Road • 351-2277
Hours: Mon. 7 - 9 P.M. Tues. 4 - 8 P.M. Wed. & Fri. 3 - 7 P.M.
Thurs. 9 A.M. - 12 Noon. Sat. 9:30 - 12:30

October has been proclaimed Family Practice month of the year by the American Academy of Family Physicians.

BUCKET BRIGADE

The Bucket Brigade, which serves the western suburbs, was organized eight years ago to provide home cleaning service to select clientele. In order to service these private homes the Bucket Brigade employs a staff of housewives who are from the local area. There are teams of at least two women, complete with supplies and vacuum cleaner, who complete the housecleaning.

The newest franchise of the Bucket Brigade has been purchased by George and Karen Bond of Carol Stream. Their exclusive territory includes all of Bloomingdale.

JOIN IN THE FUN...

Adult Recreation Volleyball leagues begin on November 8 and run thru December 27. Practices are on Tuesdays, with games on Thursdays. Teams or individuals are invited to join in.

30 and Over Basketball League begins practice October 10. This is a recreational league for the non-serious basketball player. Games will be on Monday and Wednesday,

played on a half court. Players must be over 30 and Bloomingdale Park District residents.

Beginning November 4 the gym will be open for Friday Nite Fun Volleyball. This could be a perfect way to start off the evening. Put a little variety and exercise into your life.

For more information about the above, please call the Park District office at 529-3650.



"We've been peddlin' since 1958"

*The Most Unique Family Owned
and Operated Business in Town.*

Econ-O-Mart

110 SOUTH RIDGE
BLOOMINGDALE, ILLINOIS 60108

529-5490

HOURS:

Mon., Tues., Thurs. 9-8 Sat. 9-6 - Sun. 12-6
Fri. 9-9 Closed Wed.

**Celebrating Our 25th Year of Service
to Bloomingdale**

TALENT AUCTION

Welcome Wagon Club of Bloomingdale will hold its sixth annual Talent Auction. The auction is scheduled for Tuesday, November 1, 1983 at 7:30 P.M. at the Bloomingdale Park District, 172 S. Circle Avenue.

The auction will include handmade crafts and many Christmas items, along with homemade baked goods. All items are donated by club members. All proceeds from the event are donated to charity.

This is an excellent way to get a headstart on your Christmas shopping. Everyone is welcome. Come and bring a friend.



CHRISTMAS TOUR

The Bloomingdale Women's Club is offering a most pleasurable way to put us in a holiday mood with its Christmas Tour of Homes. The tour takes place on Sunday, November 27th from 12 Noon to 6:00 P.M.

It will take us through five outstanding homes in the Bloomingdale and neighboring areas. The homes will be completely decked with flowers, custom accent pieces, Christmas trees and beautiful seasonal trims. Two of the florists decorating are Bloomingdale Flowers and Plants (Koehlers Barnyard) and Schefflers (nearest location in Glendale Heights).

Coffee and rolls will be served at Noon prior to the tour. Tickets are \$5.00 pre-sale and \$6.00 on the day of the tour. For tickets and more information call:

Pat 893-5169
Lynne 980-5078
Colleen 980-9368

Sometimes we all need a little push to get into the spirit of the season. The Women's Club has found a lovely way to ease us into it gently.

MUSEUM..... "JACQUARD TEXTILE EXPERIMENTS OPENS OCT. 8TH"

"Jacquard Textile Experiments" is a Smithsonian Institute traveling exhibition featuring the work of 17 contemporary fiber artists producing stunning weavings on an antique Jacquard loom.

The Jacquard loom was invented in the mid-18th century and uses punched cards to carry the design information. As an early predecessor to the computer, the Jacquard mechanism allowed the weaving of large, complex brocade patterns and virtually revolutionized the weaving industry.

In contrast to the contemporary weavings in the exhibit, the Chicago Historical Society has generously agreed to loan us five excellent antique coverlets all of which were produced on a Jacquard loom in the 1800's. The oldest sample dates from 1826 and contains the name of the weaver and the title "agriculture and manufacturers are the foundation of our Independence", a saying which still holds true today!

The Museum is located at 108 S. Bloomingdale Rd. and is under the auspices of the Bloomingdale Park District. Museum hours are: Tues. & Thurs. 3-6 and Sat. 10-2. Group arrangements at additional times are always welcome. For further information, please call the Park office at 529-3650.

"BEAUTIFUL WORLD OF CHRISTMAS"

The Bloomingdale Women's Club will present its 5th annual "Beautiful World of Christmas" auction on Thursday, November 17, 7:30 P.M. at Indian Lakes Resort. Donation is \$2.00 and tickets are available from club members or at the door. Proceeds will be given to a local charity.

Going to the highest bidder will be items such as a quilted Christmas tree skirt, a needlepoint train set and odds of handmade items donated by club members. The Bazaar table will feature assorted Christmas ornaments.

Refreshments and raffle prizes will be part of the fun evening. A cash bar will be available. For more information call Nancy 529-3117 or Kathy 529-4731.

SPINNING, DYEING AND WEAVING

In conjunction with the park district museum weaving exhibit, Oct. 8th to Nov. 5th, the Museum is offering a class on spinning, dyeing and weaving for youths on Sat. mornings from 9:30 to 11:30. The class is designed to teach the basics of these interesting crafts and is taught by Carol Huntowski, a former demonstrator of pioneer crafts for the Chicago Historical Society. Sign up now! Class begins Oct. 15th.

<p>"Compare with me... Before you pay your next Auto or Homeowners Premium" LARRY BEEMAN 529-0114</p>		<p>FREE ROAD ATLAS</p>
	<p>107 S. Bloomingdale Rd. Bloomingdale, IL 60108</p>	
<p>State Farm Insurance Companies Home Offices: Bloomington, Illinois</p>		
<p>STOP IN WITH YOUR PRESENT POLICY PICK UP YOUR COMPUTER QUOTATION AND FREE ATLAS.</p>		

LIBRARY NEWS CHILDREN'S CORNER



Autumn days are here and with them exciting times for *YOU* at your library. Pre-school *STORY HOURS* in October and November are on Wednesdays at 1:30 and Fridays at 10:30. Your *HALLOWE'EN* party on Saturday, October 29th at 1 o'clock will be great. A wonderful mime show, a scary movie, and a demonstration of costuming and 'how-to-do' make-up... Come in costume, we'll award prizes for the best ones!



Grimace put in a guest appearance at the library's end-of-the-summer-reading game party on Aug. 27.

And remember to...

Come *READ* a book, there are thousands to choose from... Come *HEAR* a book, almost 200 of your favorites are on records and tapes... Come *See* interesting and beautiful displays, and ask how you can show your treasures too... Come *LOOK* at a magazine, 16 special children's titles are available... Come *TRY* a puzzle, pre-schoolers... Come *PLAY* a game, we have them... Come *FIND* a friend, pen pals from all over the world are waiting for you... And come *STUDY, LEARN* and *EXPLORE*, encyclopedias and fantastic fact books are at your *LIBRARY*.

"AS I REMEMBER"

by Herbert Frick

Most of us have had the pleasure of listening to someone reminisce about the years gone by. We feel lucky indeed that one of our lifetime residents has chosen to share some of those memories of growing up in Bloomingdale. What follows are excerpts from a narrative written recently by Herbert Frick. He wrote this as it came to him so it doesn't follow in any chronological order.

I was born May 4, 1921. My mother came from Niles Center, and my father came from Bloomingdale. My mother had eleven brothers and sisters. Some of them went to Wisconsin, and some stayed in Evanston and Niles Center or Skokie as it is now called.

I remember going on a train to visit my aunts and cousins, but I was only three or four years old and don't remember too much. My grandfather, my mother's father, would come out to our farm. I can remember him telling me that he had all of the sparrows locked up in the chicken barn.

We had a threshing ring of about twenty farmers around Bloomingdale. The original steam engine and stacker was a Wiltman-Taylor outfit bought new in 1903. I have the original contract my grandfather signed in 1903. In about 1925 or 1926, they bought a 36-60 Reeves separator that was used until the ring broke up in about 1927. My dad got the steam engine which we junked. I still have the whistle and steam pressure relief valve. If I had that engine today, it would be worth a fortune.

My father, Conrad Bender, and Fred Ehlers threshed together until 1937 when Fred Ehlers sold his farm. Bender bought our share in the separator, and then we threshed with Kelly Kroegh's outfit until 1949 when we went to combining.

Fred Ehlers had a big sixteen horse single-cylinder gas engine and corn shredder. I went to school about 8 o'clock in the morning, and they would have the engine started and ready to go to work. Sometimes, the water pump would be frozen, and they would thaw it out by dipping a corncob in gasoline and using that as a torch. I tell my neighbors in the subdivision that on a clear, cold day I can hear that engine in my mind when they shredded corn at our neighbors.

Merly Fessler and I were the last two pupils to graduate from the old school which is now Latt's Furniture. We graduated in 1935.

My folks celebrated their 25th Anniversary in 1934. My mother's relations came out from Evanston and Niles Center and surprised them. The haymow was empty, so they went up town and got a car battery and spotlight. My cousin played the accordion, and they danced until 2 o'clock in the morning.

We had a Fordson tractor which I learned to drive when I was about sixteen years old. I never liked horses very much so my father did the work with the horses, and I did the tractor work.

My grandfather, Fred Frick, lived across Lake Street on a small farm. I would drive horses on the hay fork when we unloaded hay. At that time, there was only one or two cars on Rosedale Road a day.

When I was between seven and ten years old, when the weather was good, my grandfather would load up our box wagon with earcorn and oats, and we would drive with a team of horses to Roselle to get the corn and oats ground into feed for the cows.

I had a friend, Lawrence Haberkamp, who was two or three years older than I. While we waited to have the feed ground, Lawrence and I would play together, and my grandfather would give me a quarter to go to the ice cream parlor to buy my friend and I an ice cream cone.

Continued on Page 11

"AS I REMEMBER"

In 1924, my dad bought a Buick touring car from George Rentner and William Krueger, who had the garage which Latt Furniture has remodeled. Somewhere, I have the original bill of sale. I think the price was \$1014, no tax.

In 1929, our local painter and wallpaper hanger passed away. He was Fred Hillman. His daughter is still living. They asked my father to put the top down on his Buick so they could haul the flowers to the cemetery with it.

I remember when we butchered hogs for our winter supply of pork. When I got out of high school, it was my job to catch the blood from the pigs. I had to keep stirring it so it would not clot. If there was fresh snow on the ground, I stirred that in to help keep it from getting thick. My mother would bake the blood in pans and mix it with raisins. She would fry it for breakfast, and I would eat it with syrup. Boy, was that good!

We would make liver sausage, head cheese, summer sausage, and grits sausage. I had to grind what was called leaf lard so it could be rendered. The part that would not melt was called cracklings, and that was mixed with apples and eaten fried. The pork chops were partly fried, and then stored in a stone crock with layers of lard and meat until the crock was filled. The brains were called sweet breads, and they were mixed with eggs and fried. It was a delicacy. The feet and hocks were scrubbed and pickled and used for sauerkraut. The hams and bacon were smoked in the smokehouse as were some of the sausages. The pigs' intestines were used for sausage. We would clean the dirt out of them and then turned them inside out by using warm water to get them started. My mother and I would laugh so hard we almost cried, because they were so slippery. I still have the sausage stuffer. Sometimes, if we had some left over, we would blow them up like a balloon and put kernels of corn in them so they would rattle when they dried.

In the fall, we would get logs from my grandfather's woods. We would saw them in eight or ten foot lengths, split them, haul them home, and pile them up to dry. During the winter, when there was a lull in other farm work, we would go from one neighbor to another and saw the wood up with a buzz saw. When I was old enough, I would help split the wood so we could put it in the woodshed. I didn't care much for packing the wood in the woodshed.

We had a cookstove in the kitchen to cook and bake with, and it had a reservoir on the back to keep the water hot for washing dishes and taking a bath. We used a blast heater and a baseboard heater to keep warm. We used kerosene lamps until 1949, when I put in electricity. We carried water from the well which was quite a ways away, so we didn't use water like we do today with running water. To wash clothes, I had to work the wash machine by hand until I was old enough to run a gas engine. When I graduated from high school in 1939, my dad bought siding that looked like brick. We put it on in the fall of 1939. We would unroll several rolls on the grass in the morning so it would be pliable. We husked the corn in the morning and put on the siding in the afternoon.

We would have one or two family gatherings in the summer time. Everybody would bring food for a pot luck dinner. We would play baseball and other games.

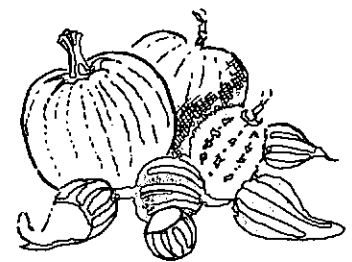
In 1941, I worked for Chris Hoff on a feed grinder until the war came along, then I worked on the Rosewood farm from 1943 to 1946 because the war board said Chris didn't need help to make hammer handles which is what they thought a hammermill was. In 1947, I took over a feed grinding business. I got married October 18, 1947, and I ground feed and farmed until 1973 when I quit grinding. The last ten years I have just been farming until 1982 when I had my hip replaced. I fell down and now I don't have a right hip so I have to depend on somebody else to work my farm for me.

NEW LIBRARY DIRECTOR

At the July 20, 1983 regular meeting of the Bloomingdale Public Library Board of Directors, Bernadette Tasher was appointed to fill the position vacated by resigning director Paul Ingevaldson. Mr. Ingevaldson had been a member of the Board for five years, serving on various committees and as President and Treasurer. Ms. Tasher is a past director of the Westlake Townhome Owner's Association and has been active in the Winnebago PTO and as a Brownie Troop leader. She will serve as a director on the seven member Board until April of 1985.



Laura Hartsgrove - Miss Bloomingdale, 1983



BWC Festival of Arts



Jim Selcke, Bloomingdale resident, won first place in the oil/acrylic/watercolor division.

NEWS OF WINNEBAGO SCHOOL

School District 15 has sought to equalize student enrollment in its schools. Therefore, after careful planning and study, school attendance area boundaries were changed last Spring. Winnebago School was pleased to accept a number of students transferred in from Black Hawk School.

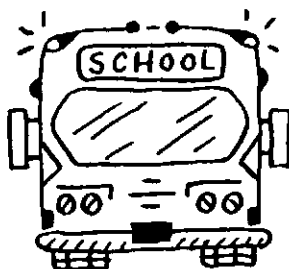
Due to extensive studies completed prior to the changes, it is anticipated that there should be no need to make any more changes for at least ten years. School District 15 is striving to provide a stable school environment for all its students.

A portion of the roof has been replaced at Winnebago School. New heating and air conditioning units have been installed. Entrance vestibules have been constructed. Electric light switches have been installed in the class areas. All this construction work began the day after classes ended — June 8 — and was completed by September 30.

Absent from school? — please call. Parents whose children are absent from school should plan to call the school the day of the absence. If the school is not called, we will call home to find out where the child is. We are concerned about the safety and welfare of our students. Therefore please call about absences so that both home and school can be sure the children are safe.

For further information, please call:

Charles G. Meschler, Principal
Winnebago School
893-1880



DISTRICT 13 NEWS

by Brandt G. Crocker, Superintendent

Classes began this year with 23 fewer students than last year, due mainly to the very large class graduated from eighth grade last year. 1207 students now attend our three schools, with 31 special education students enrolled outside the district.

We welcome five new teachers this year. The equivalent of seven and one-half positions were vacated due to pregnancy leaves and resignations, but only five were filled. Because the district hires certified teachers as aides, we were able to fill four of these positions with teachers who were aides last year. The transition is thus smoother for our students.

At DuJardin School, Kathy Gavin, an intern from Loyola University, is our administrative intern, doing many of the duties covered by Sally Pryor, Assistant Principal, last year.

Also welcomed at our schools were 14 new microcomputers, purchased with funds donated by our PTO and STP organizations. Teachers attended workshops during the sum-

mer to be able to put these new teaching tools to work. Our Curriculum Committee is working hard to update instructional goals to include these new electronic learning tools. A Software Committee is reviewing software with the administration. Most materials currently available are applicable to students ten years of age and up; more is being developed. Every student will have the opportunity to work with a computer during the year. Parents may also have some "hands-on" workshops later in the year.

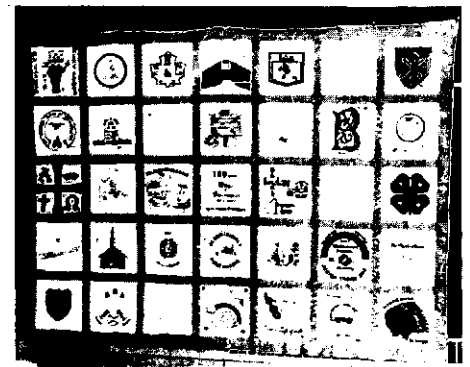
In August we received approval from the state Board of Education for our gifted program in art, reading and mathematics. A grant in the amount of \$4661 was awarded for the program. This year we will be examining further gifted programs in critical thinking and science.

A federal block grant of \$8001 will be used for library materials and teacher workshops. Our federal grant for remedial mathematics at Westfield has been increased from the earlier figure of \$17,407 to \$30,974.

HEAR WHAT YOU'VE BEEN MISSING

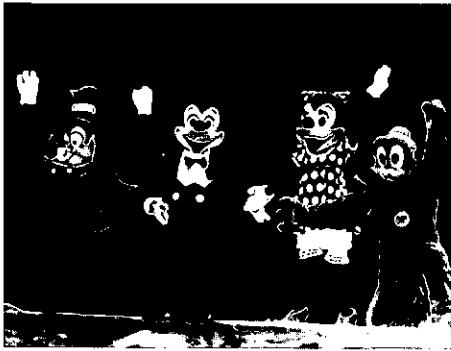
Many new services and materials have been added to the new Bloomington Public Library during the past year. The most recent offerings include records and cassettes for both adults and children. A wide variety of music including classical, jazz, rock and folk, as well as award-winning children's books, foreign language and office skills instruction, aerobic dance and great American speeches, can be found in the collection. You may listen in the library on record and cassette players available for public use, or check the items out for one week for home use. Stop by soon and "hear" what you have been missing! The library is located at 101 Fairfield Way and

is open Monday - Thursday, 9:30 a.m. to 9:00 p.m., Friday and Saturday 9:30 a.m. to 5:00 p.m.



The Sesquicentennial Quilt, representing 35 organizations, will be on permanent display in the library.

BREAKFAST WITH MICKEY



Mickey and Friends delighted young & old with a little soft-shoe.



WHAT'S HAPPENING

- October 8 - Museum Exhibit "Jacquard Textile Experiments"
November 5 Call Park District for details, 529-3650.
- October 14 Lions Candy Day
- October 18 Public School Superintendent Forum 7:00 P.M. at Library.
Sign up at Library.
- October 20 "Theft: Don't Let It Scare You" Chamber of Commerce
presentation 6:00 P.M. at Indian Lakes Resort.
Call 980-9082 for reservations.
- October 22 Blood Drive 8:00 A.M. - 12 Noon at DuJardin School.
Call 529-0429 or 529-7548.
- October 22 Drawing for Raffle to benefit Founders' Park
at Glendale Country Club 8:00 P.M.
- October 29 Halloween Party for children at Library 1:00 P.M.
- November 1 Welcome Wagon Talent Auction 7:30 P.M. at Park District.
- November 17 Bloomingdale Women's Club "Beautiful World of Christmas"
7:30 P.M. Indian Lakes Resort. \$2.00 admission.
- November 27 BWC Christmas Tour of Homes 12:00 Noon - 6:00 P.M.
Call Pat 893-5169 or Lynne 980-5078.

ONLINE REFERENCE SOURCE

Your Bloomingdale Public Library card is now the key to a vast storehouse of computerized information provided by DIALOG Information Services. DIALOG, to which the DuPage Library System now subscribes, is a collection of over 150 data files ranging from Electronic Yellow Pages to Disclosure II, extracts of financial reports filed with the S.E.C. by publicly owned companies. Other files are specific to chemistry, education, current affairs, and much more. A \$10.00 fee is charged for each file searched.

Because the files are searched electronically, answers are generated in a fraction of the time it would take to look through printed indexes. Also, these records are updated more frequently than printed sources, in some cases weekly.

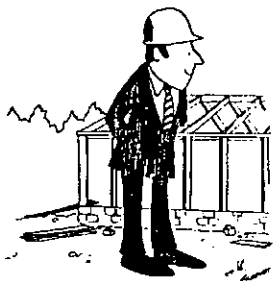
To find out how a DIALOG search might help you in your business or profession, visit the Library at 101 Fairfield Way, or call 529-3120.

CHURCH DIRECTORY

- Bloomingdale Assembly of God 893-9682
Pastor: David A. Tangen
194 West Lake Street
Bloomingdale
- Bloomingdale Church 893-3066
Pastor: David Riemenschneider
260 Glen Ellyn
Bloomingdale
- Bloomingdale Baptist Church 980-6161
Pastor: Dr. Martin G. Stuck
245 Bloomingdale Road
Bloomingdale
- Bloomingdale Community Church 980-6077
Pastor: Patrick Pazdsiora
Westfield School (Temporary)
Bloomingdale
- Christ The Redeemer Lutheran 529-8290
Pastor: Kenneth A. Stoyer
241 Army Trail Road
Bloomingdale
- Incarnation Episcopal Church 351-3249
Pastor: Alvin Johnson
Central School (Temporary)
Bloomingdale
- St. Isidore Catholic Church 529-3045
Pastor: Henry Slade
227 West Army Trail Road
Bloomingdale
- St. Paul United Church of Christ 529-6173
Pastor: James P. Beecken
First and Washington Streets
Bloomingdale

TIPST

from the
Building Inspector



The building inspector can serve as your "construction counselor" to help build homes that are safe and save unnecessary time and money. Instead of greeting him with wariness, try to remember: he is not there simply to find out what is wrong; he's there to help insure the safety of yourself and your family.

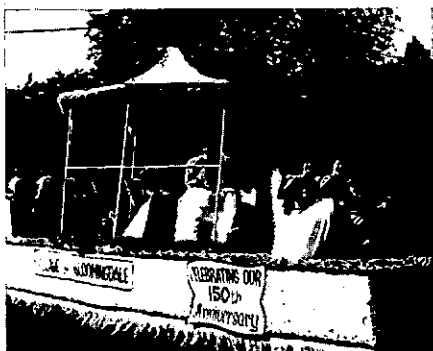
Member of:



893-7000 EXT. 29

Copyright 1976 by Building Officials and Code Administrators International, Inc.

HIGHLIGHTS OF THE PARADE



A half-scale Conestoga wagon, built from scratch by William Swanson, Industrial Arts teacher from Westfield and Frank Kelton, volunteer at the school and some help from the students.

“SEPTEMBERFEST, 1983”



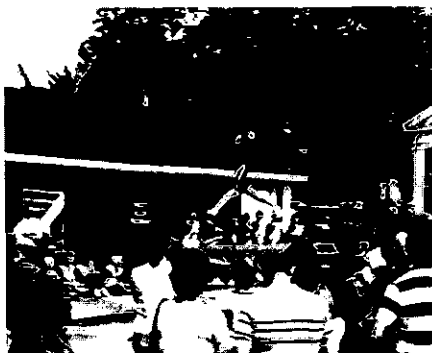
Mrs. Laura Fessler delighted the audience during opening ceremonies with her accounts of being a child in early Bloomingdale.



The Queen and her court — Bob Burack of Lustig Jewelers, Shannon Pearce, Lynn Beckerman, Monica Bolling, Queen Laura Hartsgrove, Dawn Carollo, Amy Brannon, Dawn Bernhard.



Tiffany Hillgoss, Amy Cronk and Tracy Decker aptly representing the Antique Club.



The Beamers were very impressive.



A couple of youngsters had a bird's eye view of the Queen ceremony.



Chuck Schenk took Best of Show with his watercolors in BWC Festival of Arts.

“WHAT DO YOU THINK?”

To restructure water and sewer rates, we tried to conserve water so we get a bill of \$9.60 water and \$24.30 sewer. Now anyone using 18,000 gallons of water pays about \$.50 for sewer and some rich devil who uses over 24,000 gallons has no charge on sewer. So it is “hit the little guy” and anyone who can afford 24,000 gallons (business - who get tax write-offs) gets a break. I am a worker and am being taxed out of existence. I think everyone should pay equal and shift the burden from taxed middle class.

Harold Johnson
140 S. Pleasant

Our rate structure for water and sewer use is set up to distribute the charges based on the demand, and on fixed costs which do not vary with the amount of water or sewage. Residential use is billed on a bi-monthly rate and commercial use is billed at a higher monthly rate. A typical single-family residence will use 15-16,000 gallons every two months, although higher consumption occurs during summer months when outdoor uses increase. We recognize that in the rates by the

24,000 gallon break point at which the charge per thousand gallons increases, even though no sewer charge is included.

*Daniel C. Wennerholm
Director of Public Works
and Engineering*

We wish to extend a warm thank you to the Bloomingdale Fire Department for the excellent service they rendered during an electrical fire in our home. They arrived in record time, saving our home from extensive damage and were considerate and conscientious in dealing with our home and family. Also a thank you goes to the Village building inspector who arrived promptly allowing us to restore service as soon as possible. Bloomingdale can be proud of its fine city services.

Fisher Family
110 Langton Drive

We are indeed proud of the Bloomingdale Fire Protection District. It is good to hear comments such as those from the Fisher family. The building inspector the Fishers refer to is Jim Bandel. We are also proud to have this hardworking and caring

individual on our Village staff.

Editor

Once again the residents living east of Bloomingdale Road would appreciate some thought being given to a traffic light at the corner of Edgewater and Bloomingdale. Is there any chance of a traffic check being done on this spot again this year?

Name withheld by request

We had again requested that DuPage County perform some traffic counts at this intersection to see if a traffic signal was warranted. The result was that traffic did meet one of the various warrants. The Village will now be permitted to install a signal at our expense, at which time we would also have to widen Bloomingdale Road to provide a left turn lane. We will be preparing an estimate of costs later this year for such a project which may then be considered by the Village Board during the next budget process; next spring. A schedule for construction will depend on available funding.

*Daniel C. Wennerholm, P.E.
Director of Public Works
and Engineering*

OPINION FEATURE

Please tell us if you have any suggestions or questions for your Village. What you think is important to us. Write your thoughts below, then detach and mail to "What Do You Think," Village of Bloomingdale, 201 S. Bloomingdale Rd., Bloomingdale, IL 60108. No unsigned submissions will be considered. The ALMANAC reserves the right to reprint all or part of the submission depending upon length. We do, however, try to retain the gist of the query.

My thoughts are as follows: _____

Name _____ Address _____

Print my name: Yes _____ No _____

BLOOMINGDALE BUSINESS DIRECTORY



Village Of
Bloomingdale

201 S. BLOOMINGDALE ROAD
BLOOMINGDALE, ILLINOIS 60108

BULK RATE
US POSTAGE
PAID
Bloomingdale, Ill.
60108
Permit No. 16

POSTAL PATRON, LOCAL
BLOOMINGDALE, ILLINOIS 60108

ACCOUNTANTS

Schoen, Coyle & Co.
Certified Public Accountants
125 S. Bloomingdale Road
980-4121

BURGLAR ALARM SYSTEMS

Slager Security Systems
123 First Street
529-0198
We Specialize in Homes & Offices

CARPET CLEANER

Broom Brigade, Inc. 894-4666
Commercial & Residential Cleaning
Carpet • Upholstery • Walls • Windows
Furniture Touch-up & Repair

CARPET CLEANER

Sansone Carpet, Drapery
and Upholstery Cleaners
312 Edgewater Drive
893-4010

CHIRPRACTOR

Bloomingdale Chiropractic Clinic
Dr. James Dean
181 S. Bloomingdale Rd.
980-5460

CHIROPRACTOR

Keller Chiropractic Clinic
220 E. Lake Street
980-6555 Hours by Appointment
Total Health Care Facility

DENTIST

Frank D. Letizia D.D.S.
Clover Leaf Towers Suite 309
201 E. Army Trail Road 529-0303
Family Dentistry

DENTIST

William J. McElroy, D.D.S.
183 S. Bloomingdale Rd., Suite 105
351-4440
Children's & Hospital Dentistry

DENTIST

Robert Meyers, D.D.S.
135 First Street
893-4650
Office Hours by Appointment

DENTIST

James Paradowski, D.D.S.
255 E. Lake Street
529-7130
Office Hours by Appointment

GENERAL MERCHANDISE

Econ-O-Mart
110 Ridge Road
529-5490
You're invited to browse and save.

HARDWARE

Warnimont's True Value Hardware
23 W 745 Lake Street
529-3030
Comm. Edison Bulb Service

HOUSECLEANING

The Bucket Brigade
289-9733
"Reliable, Personal Homecare"
Free Estimates

INCOME TAX SERVICE

Behr & Co.
Certified Public Accountants
Tax & Financial Planners
247 Lakeshore Lane 351-0003

INVESTMENTS

IDS
Investors Diversified Services
Dorothy J. Lingeman
359-3220 or 529-0858

JEWELER

Lustig Jewelers *Since 1949*
Stratford Square Mall Upper Level
351-8900 Diamond Setting • Engraving •
Custom Jewelry • Watch & Jewelry Repair

MAGIC-GIFTS-NOVELTIES

Magique
159 West Lake Street
980-4980
Good deal in laughs and smiles

NURSING HOME

Applewood Manor Convalescent Center
275 Army Trail Road
893-9616
"Let our family help yours"

NURSING HOME

Bloomingdale Pavilion Nursing Home
311 Edgewater Drive 894-7400
Retirement • Convalescence • Restorative
Nursing • Rehabilitation • Intensive care

OBSTETRICIAN and GYNECOLOGIST

Dr. (Mrs.) Malathi Seshadri
Clover Leaf Towers Suite 307
201 E. Army Trail Road 980-7545
24-hour Answering Service

ORTHODONTIST

Dr. Clayton J. Crane
Clover Leaf Towers Suite 309
201 E. Army Trail Road 894-4333
Practice Limited to Orthodontics

PHARMACY

Bloomingdale Pharmacy
Bloomingdale & Schick Roads
980-9198 or 980-9199
Free Prescription Delivery

PHOTOGRAPHERS

Art Craft Photographers
First Street & Schick Road
529-8400
Weddings • Portraits • Invitations

PRINTING

Budde's Print Shop
159 West Lake Street
894-4009
Let Us Make You Look Good In Print

PROFESSIONAL PHOTOGRAPHY

Portraits • Model • Family • Advertising
Studio • Home • Outdoors
Inexpensive, Prompt, Personal Service
980-1316 20% Discount With This Ad

SECRETARIAL SERVICE

Western DuPage Secretarial Service Inc.
109 Fairfield Way — Suite 106
893-9340
Exec. Typing & Word Processing Service

VETERINARIANS

Bloomingdale Animal Hospital
Drs. Borman, Olson & Page
290 Glen Ellyn Road
893-4330