

Village of Bloomingdale

# Almanac

December 2004



Holiday giving opportunities abound! See page 13.

## From the Desk of Mayor Bob Iden

Despite the size of the Bloomingdale's population, we like to brag about the "small town" feel of our Village. Perhaps another aspect of that small town atmosphere is the ability of the "rumor mill" to generate inaccurate stories.

There is a rumor currently circulating which involves Stratford Square Mall. I want to set the record straight. Stratford Square Shopping Center is not closing. Nor is Stratford Square going to be knocked down to build residential units of any kind.

There is a residential development currently under consideration by the Village Board for the southwest corner of Springfield & Schick. It is possible that news of this proposed residential area caused the rumor that all of Stratford Square would be gone.

Stratford Square has been, and continues to be, a valuable partner in the economics of Bloomingdale. One of the most recent improvements to the property is Kid's PlayTowne, the children's play area located outside of the lower level of JC Penney. Several climbable structures representing Bloomingdale in kid size offer lots of fun for the little ones.

Indian Lakes Resort also came under discussion this past summer when the owners brought up the possibility of developing one of the golf courses for an upscale residential area. This was met with a predominantly negative response from the surrounding residents, and as for now, the resort has abandoned that plan.

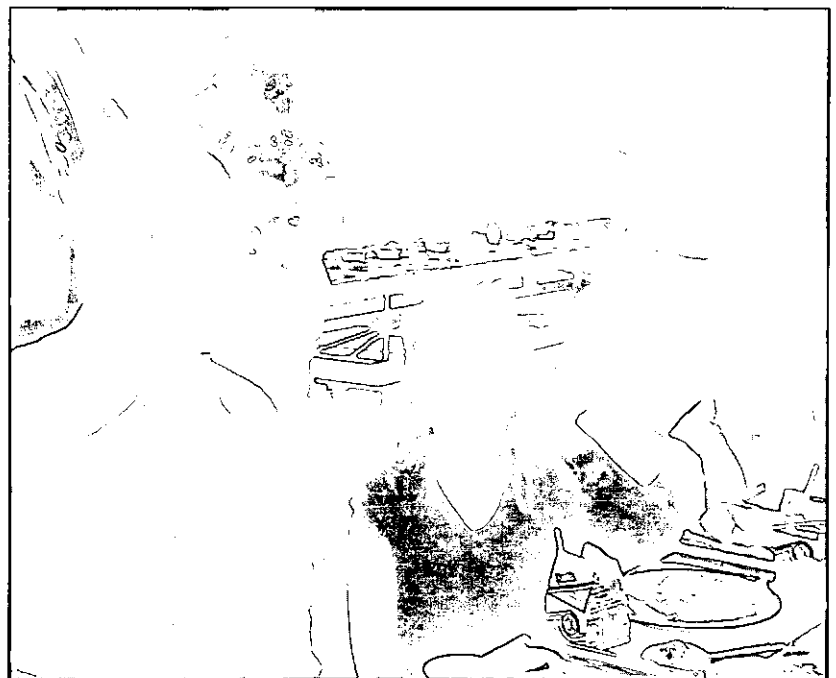
Hopefully, this information will help alleviate some of the misconceptions residents may have acquired through rumors.

On to more seasonal topics...I always know the holidays are close at hand when I enjoy a Thanksgiving Feast with youngsters from Erickson School. Pictured with me to the right are members of the second grade class. This is the 9th year the school has hosted this seasonal tradition.

And, in keeping with tradition at this special time of the year, there are once again, a number of ways residents can share the joys and spirit of the holiday season. See page 13 for a few of them.

Look around, there are many other opportunities to share the holiday spirit - food drives, Toys for Tots, and more - being sponsored by area schools, churches and businesses.

Happy Holidays to all!



**VILLAGE BOARD,  
COMMISSION & COMMITTEE  
MEETINGS**

*The public is encouraged to attend all Board  
and Commission meetings*

**REGULAR MEETINGS  
OF THE VILLAGE BOARD**

2nd and 4th Monday of every month  
7:30 p.m. -- Village Hall

**COMMITTEE OF THE WHOLE**

1st, 2nd 3rd & 4th Mondays of every month  
7:30 p.m. -- Village Hall

**PLAN COMMISSION**

1st and 3rd Tuesday of every month  
7:30 p.m. -- Village Hall

**BOARD OF FIRE AND POLICE  
COMMISSIONERS**

3rd Wednesday of every month  
5:00 p.m. -- Village Hall

**POLICE PENSION BOARD**

Quarterly beginning in January  
4th Monday  
5:00 p.m. -- Village Hall

**LIBRARY BOARD OF TRUSTEES**

2nd Wednesday of every month  
7:30 p.m. -- Library

**CHAMBER OF COMMERCE**

Board of Directors Meeting  
1st Thursday of every month  
8:00 a.m. -- Indian Lakes

**FAMILY FEST COMMISSION**

3rd Wednesday of every month  
9:30 a.m. -- Library

**SEPTEMBERFEST COMMISSION**

2nd Tuesday of the month  
March-December  
7:00 p.m. - Village Hall

**BUSINESS PROMOTION &  
CULTURAL DEVELOPMENT  
COMMITTEE**

1st Friday of the month  
10:00 a.m. - Village Hall

**BLOOMINGDALE FIRE PROTECTION  
DISTRICT BOARD OF TRUSTEES**

2nd Tuesday of the month  
7:30 p.m. - Firehouse,  
179 S. Bloomingdale Road

*The following committees meet on a less regular  
basis or as needed. Call the Village Hall at  
671-5600 for the next scheduled meeting.*

**RECREATIONAL PATHWAY  
COMMITTEE**

As needed

**ZONING BOARD OF APPEALS**

Six times a year or as needed

**VILLAGE OF BLOOMINGDALE  
ELECTED OFFICIALS**

**Robert G. Iden**

*Village President*

**Susan L. Bartucci**

*Village Clerk*

**TRUSTEES**

**Bill Bolen**

*Legal & Intergovernmental*

**Robert Czernek**

*Finance & Personnel*

**John Dabrowski**

*Police*

**James M. Gebis**

*Planning, Zoning  
& Environmental Concerns*

**Judi Von Huben**

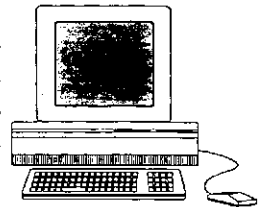
*Community Programs &  
Special Events*

**Gloria Reyes**

*Public Works & Services*

We'd like to hear from you:  
Please note our website  
address --

If you're "surfing the  
net" and have a ques-  
tion to ask or an issue  
to bring to our atten-  
tion, just E-mail it to us.  
If you wish to send us  
an electronic message, our address is:



**VILLAGE.BLOOMINGDALE@world-  
net.att.net**

Our website address is:

[www.vil.bloomingtondale.il.us](http://www.vil.bloomingtondale.il.us)

The deadline for  
the February issue  
of the  
Almanac is  
**JANUARY 10**

**Happy Retirement, Bill Wolff!**



Mayor Bob Iden (l) and Police Chief Gary Schira were among the nearly 200 people who turned out last month to wish Bill Wolff a happy and healthy retirement. The assistant fire chief retired after 32 years of service.

## B.I.G. Celebrates 10th Anniversary

The Bloomingdale Intergovernmental Group (B.I.G.), a coalition of local agencies that works together to share information, celebrated its tenth anniversary at a luncheon meeting in October.

Originators of the group were Jerry Gordon, then superintendent of School District 13, Bloomingdale Parks Director Steve Scholten, and Village Manager Dan Wennerholm. The trio had been meeting regularly to share information and realized the value of inviting other agencies to join them. The first BIG meeting was held in 1994.

"We recognized that multiple levels of governmental agencies sometimes overlap in the service of our citizenry," Scholten said. "B.I.G. allows us to share information and resources to better provide services for that citizenry."

The group is made up of representatives from the Village of Bloomingdale, the park district, Bloomingdale Township, the police department, the fire protection district, the library, the Chamber of Commerce, the DuPage County Board, the College of DuPage, and School Districts 13, 15, 20, 87, 93 and 108.

"Our meetings facilitate discussion, nurture relationships and allow the exchange of information about current and upcoming projects," noted Wennerholm.

B.I.G. members worked together to implement Bloomingdale's lightning detection system that is in place and functioning today. The groups involved were the village; park district; school districts 13, 15 and 93; and the Bloomingdale Golf Course.

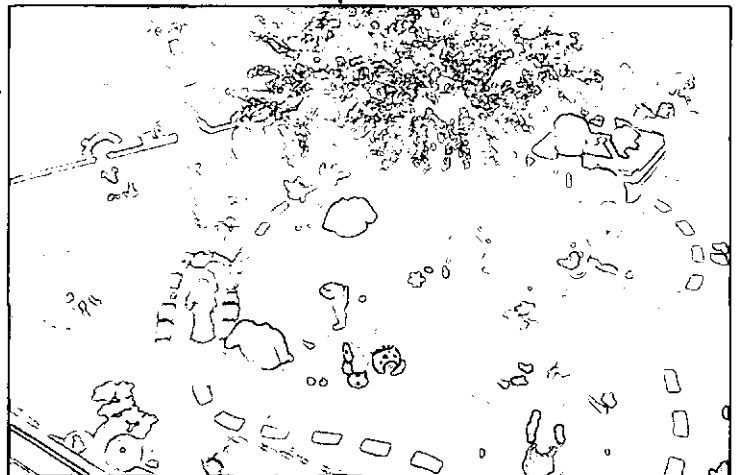
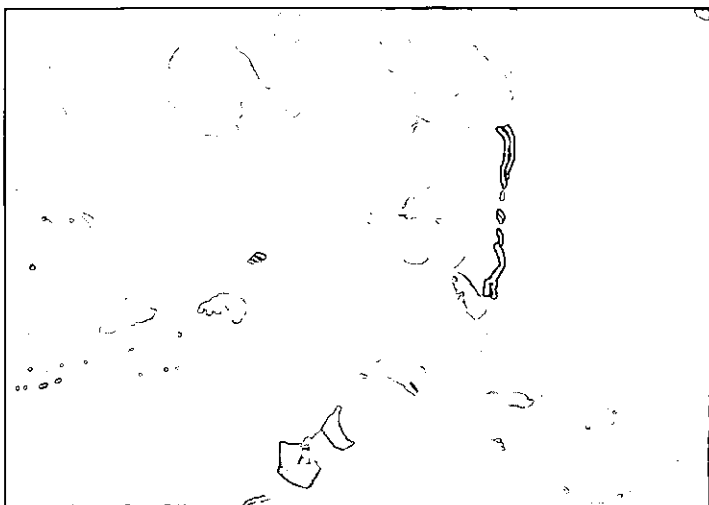
"We put in one system throughout the community. Every public outdoor space in Bloomingdale has a system that warns people to vacate the area when lightening is imminent," Scholten explained. The detection system works by evaluating the atmosphere and tracking lightening strikes if they occur 15 miles in any direction.

The meetings also allow the groups to simply share information on the timing of individual projects. When Circle Avenue was going to be renovated by the village, the park district knew early enough to plan the expansion of its parking lot at the same time, resulting in a better price by using the same contractor. Similarly, DuPage County Board shared information about the planned widening of Lake Street, allowing schools to plan for busing issues.

Current and past B.I.G. participants attended the anniversary luncheon. "We wanted to recognize the work of this unique group and mark this milestone together," Wennerholm said.

### College of DuPage Offers Workplace Spanish

The College of DuPage Center for Corporate Training provides a number of options for learning workplace Spanish. These include Business Spanish, Command Spanish, Conversational Spanish, Spanish for Health Care, including hospital and government sites, Technical Spanish and on-site Spanish classes. Call 630-942-2180 for more information.



### Let's Play!

The Kid's PlayTowne at Stratford Square opened to much fanfare and raves from the little ones on Saturday, October 30.

---

## Jim Pluess, Tom Howard Retire From Village

**Jim Pluess** retired after 30 years as a supervisor with the Village of Bloomingdale. He came here by way of Carol Stream. Jim took his first job in wastewater treatment with DuPage County just to have a job, but soon came to respect the impact this field has on the environment.



*Jim Pluess*

When he arrived back in 1974, things were "big time different," he says. He started out here as the Supervisor of Water, Sewer & Wastewater, under Bob Babyar, who was then Director of Public Works. Back then the Village Hall was in the old building at Lake and Third streets.

The Public Works building was a tin building in the same area as the big Public Works building is now. The floor in the structure was made of rock, according to Jim - not even a cement floor at that time. He remembers they would always get the trucks stuck. Things didn't come easy back then, Jim tells us. The trucks had planks on the floor to cover the holes; some seats in the trucks had boards on them to cover springs popping out. Ah, the good old days!

Jim says the greatest changes he has seen over the last 30 years have been the EPA rules & regulations, and the way the Village and its administration have grown in its philosophy over the years.

When it comes to missing things when he retires, Jim laughs that he won't miss getting up in the morning. In seriousness, he thinks he will miss working with the environment. Jim likes the fact that it has such an impact on the community and that it affects generations to come.

Mayor Iden noted "I have valued Jim's commitment to his work and thank him for 30 years of dedicated service. I wish him a long and happy retirement."

Also singing the happy retirement song is **Tom Howard**. Tom started with us in 1990 working as Mayor Sam Tenuto's Director of Village Operations. Later the title was changed to Director of Legal Affairs.

An attorney by profession, Tom has a great interest in economic development and spent a good deal of energy in this area. Tom has a number of projects he can happily say he took part in, such as getting Costco and Meijer's to locate here. He was also instrumental in getting Pontarelli Builders to pay School District 13 the full asking price for the Central School property where they built Bell Towers.

But perhaps his biggest undertaking was to coordinate the campaign to make Bloomingdale a home rule community, which allowed us to purchase what is now Bloomingdale Golf Club.

Tom says his second most exciting project was getting Comark to sign a revenue-sharing agreement.

He has been handling the Village's DUI arrests for the last seven years. Tom says he has enjoyed working with our police officers and credits our officers with giving him good, solid arrests to prosecute.

As for those retirement years, Tom plans to continue to prosecute our traffic court & DUIs, as well as do the DUIs for Carol Stream. In addition to that, he has a new project in the offing. Working with Fr. Tony at St. Isidore Church, Tom plans to volunteer his time to open a legal aid clinic for poor parishioners at the church. He's looking forward to that.

"There is no doubt that Tom has been a great asset to the Village of Bloomingdale, but I will always be especially grateful for his invaluable efforts with the home rule referendum which enabled us to purchase the Bloomingdale Golf Club. I wish him well," said Mayor Iden.



*Tom Howard*

## Reverse 911 is here . . . Are you plugged in?

The Bloomingdale Police Department has **REVERSE 911** and we want to make sure your phone number is listed in our system.

**REVERSE 911** is a computerized communication system that we use to make emergency notifications or to relay important information such as a watermain break, lost child, parade route, etc., to your business or residence.

**If your phone number is non-published or unlisted . . . you are not currently set up to receive REVERSE 911 notifications. If you have a unique or atypical phone service provider, your number might also not be listed for the police department to access. If you are in doubt as to whether the Police Department will be able to access your number, call the number listed below.**

We encourage you to add your phone number to our system.

**Please call:**

Communications Supervisor Karen Maranto or Records Supervisor Lynn Heitz at the Bloomingdale Police Department, (630) 529-9868.



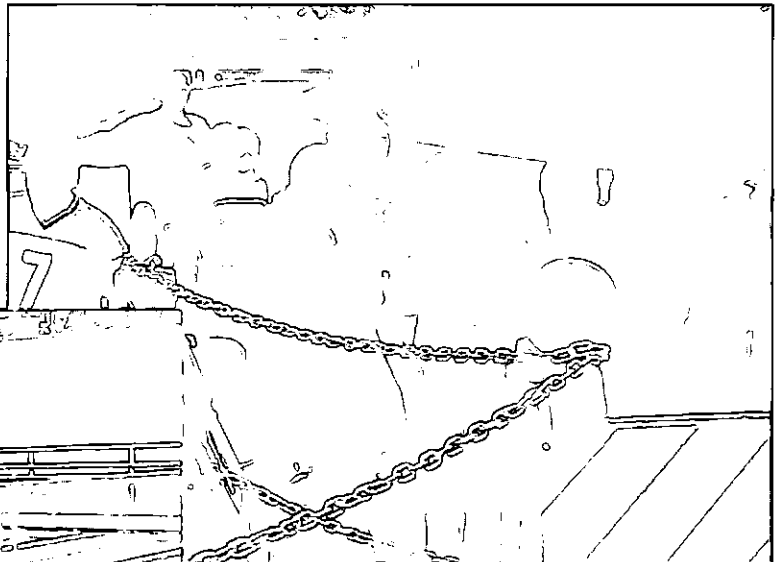
## Bloomingdale Park District Named National Gold Medal Award Finalist for Third Year in a Row

The Bloomingdale Park District was selected as one of the four finalists for 2004 National Recreation & Park Association (NRPA) Gold Medal Award in the fewer than 25,000 population class for the third consecutive year.

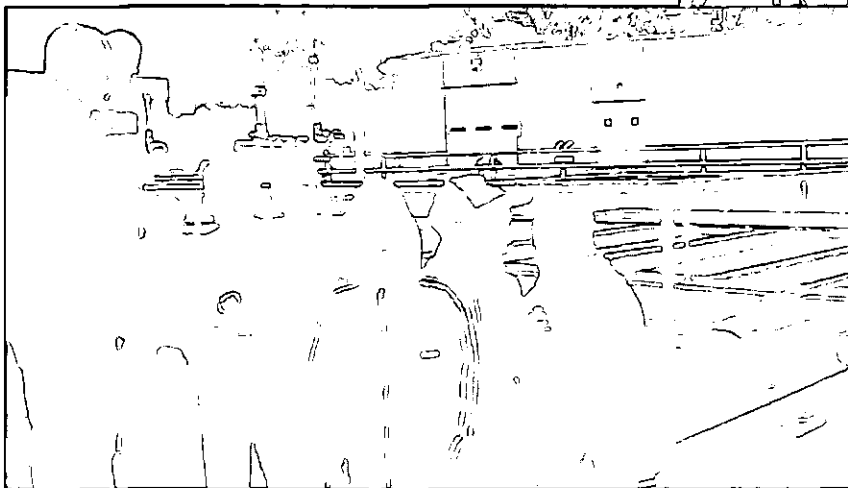
The purpose of the National Gold Medal Awards is to select and honor the nation's outstanding park and recreation agencies for excellence in the field of recreation management.

## Youngsters Get a 'Whiff' of Municipal Services in Action!

Cub Scout Pack 57 toured the Wastewater Treatment Facility in October. They got a first hand view of everything at the plant including the screenings, blowers and filters. Curiously, the Cub Scouts asked many questions, such as how does the water gets to the plant, where does it go once it gets here? Hopefully, they left with a little understanding of how the water they use today is treated at the Wastewater plant tomorrow.



*(Top photo) The sixth grade students from Marquardt Middle School also checked out the plant. Here they get a sniff of the incoming water before it's treated.*



*(Left photo) Scouts from Pack 57 pose by the chlorine contact tanks.*

## Village of Bloomingdale Expanded Holiday Weekend Hours for Dial-A-Ride Transportation

The Village of Bloomingdale will again be offering Expanded Weekend Dial-A-Ride hours during the holiday season from Saturday, November 27th through Sunday, January 2nd. The Holiday Weekend Service will run from 8:30 a.m. to 5:00 p.m. on Saturdays and from 10:00 a.m. to 4:00 p.m. on Sundays.

Bloomingdale residents may ride anywhere within the Bloomingdale Township Boundaries, and also to Central Dupage, Alexian Brothers and Glen Oaks Hospitals; DuPage Oncology Clinic, Monakea Medical Complex, Wheaton Medical Clinic, and Wheaton Eye Clinic.

Bloomingdale's Weekend Dial-A-Ride one-way rates are:

\$3.00 For Adult Residents (age 14 and older)

\$1.50 For Village Residents with a Disability, Village Seniors (age 65 and older) and for students (age 7 to 13).

Free for children (under age 7) when accompanied by a fare-paying adult

Reservations shall be accepted up to one week in advance on a first come, first serve basis. Same day service requests are accepted, however, transportation cannot be guaranteed.



**Weekend Dial-A-Ride Reservations may be made by calling:**  
**1-888-405-2060**

## 'Impressions of the Season' Featured at Holiday Art Show

A juried art show entitled "Impressions of the Season" along with a private collection of "Partridge in a Pear Tree" is currently open to the public through December 23, 2004 at the Bloomingdale Park District Museum, 108 S. Bloomingdale Road.

The fine art show holds wonderful pieces of art from local artists, juried into the show by Heather E. Pastore, Assistant Director of the Elmhurst Art Museum. A special collection of "12 Days of Christmas" called "Partridge in a Pear Tree" and several holiday trees, one decorated by the Bloomingdale Historical Society, also highlight the two galleries.

The holiday show may be viewed on Wed., 4-8 p.m.; Thurs. and Fri., 10-4 p.m. and Sat. noon - 4 p.m. during the show. Admission: \$1/resident; \$2/non-resident and \$.50/seniors. For more information call 630-539-3096.



**WELCOME**  
Bloomingdale is a  
**CRIME WATCH**  
**COMMUNITY**



We immediately report  
all suspicious activities  
to our police department

## Mark Your Calendar for Neighborhood Watch Meetings & Events

Neighborhood Watch General Meetings are held on the 3rd Wednesday evening of every other month at 7:30 p.m. in the Village Hall Council Room. The public is encouraged to come.

Each evening will have a scheduled topic and/or speaker.

The dates for 2005 are:

**January 19th**

*Scheduled Topic:*

*Open Forum with Police and Fire Department Officials*

**March 16th**

**May 18th**

**July 20th**

**September 21st**

**November 16th**

## National Night Out Against Crime

Tuesday, August 2, 2005

6:00 p.m - 9:00 p.m.

Bloomingdale Park District

## VILLAGE ALMANAC

*is published bi-monthly by the*  
**Village of Bloomingdale**

**Mary Ellen Johnson,**  
**Editor**

Address all correspondence to:  
Village of Bloomingdale  
201 S. Bloomingdale Road  
Bloomingdale, IL 60108

**671-5600**

# WINTER

## A Pile of Snow Shoveling Tips

Be heart healthy and back friendly while shoveling this winter with these tips:



- If you are inactive and have a history of heart trouble, talk to your doctor before you take on the task of shoveling snow.
- Avoid caffeine or nicotine before beginning. These are stimulants, which may increase your heart rate and cause your blood vessels to constrict, which places extra stress on the heart.
- Drink plenty of water. Dehydration is just as big an issue in cold winter months as it is in the summer.
- Dress in several layers so you can remove a layer as needed.
- Warm up your muscles before shoveling, by walking for a few minutes or marching in place. Stretch the muscles in your arms and legs, because warm muscles will work more efficiently and be less likely to be injured.
- Pick the right shovel for you. A smaller blade will require you to lift less snow, putting less strain on your body. Newer shovels are manufactured from lightweight components that are ergonomically designed from high-impact molded polyethylene that won't rust, dent or bend, and are extraordinarily strong and durable. Aluminum tubing is also lighter and stronger than old-fashioned wooden handles.
- Begin shoveling slowly to avoid placing a sudden demand on your heart. Pace yourself and take breaks as needed.

## Enjoy Your Christmas Tree . . . Then Recycle It at the Curb



**B**rowning Ferris Inc., the Village's refuse hauler, will pick up Christmas trees on your regularly scheduled refuse pick-up day, December 26th through January 21st. Place your Christmas tree in the parkway and follow these simple guidelines:

- Do not put trees in plastic bags -- they will not be recycled.
- Remove all decorations including lights, garland, tinsel, and metal (such as nails). Be sure to remove the stand.
- Dispose of artificial or natural wreaths in the regular household garbage.
- Position the Christmas tree with the cut end toward the curb for easy loading.
- Do not place artificial trees at the curb for recycling.

## Village's Snow & Ice Teams Keep Streets Safe When Snow Adds Sparkle Around Town

Going into winter, we are sure of only two things: It's going to be cold and it's going to snow. The Public Works Snow and Ice Control Team is ready to go at a moment's notice. The Team stands ready to implement the Village's "bare pavement" policy of clearing every street of snow and ice from curb to curb when the snow flies.

The Team is gearing up for its annual winter battle against the elements. Equipment preparations, salt purchases and plow driver training begin in early October. The purpose is to provide the residents, visitors and consumers with the area's safest streets when Old Man Winter casts his fury on Bloomingdale.

A rigorous preventative maintenance program for all snow fighting vehicles and equipment helps ensure the equipment will perform in the event of winter storms. Public Works begins purchasing its salt supply in November, having nearly 1,500 tons of salt on hand to deal with the winter storms.

Wonder why fully-outfitted snow plows are rolling down the street on sunny days in November? Plow drivers and secondary crews train to get familiar with their assigned routes. The drivers get out onto the streets so they can reacquaint themselves with their routes, and take note of any hazards that may damage the equipment.

The Snow and Ice Control Team takes great pride in their efforts to keep the residents of the Village of Bloomingdale safe during the snow and ice season.

# 'Sno Fooling -- Winter Weather



With the seasonal snowfall just around the corner, the Village Services Department, Public Works Division is ready to combat snow and ice on the 121 center lane miles of Village streets, making them safer for motorists.



When a storm begins, day or night, Village crews are promptly mobilized and begin spreading salt. The Village initially salts all Village streets approximately 100 feet before and after each intersection. The initial salt application mitigates icing conditions contributing to more effective snow removal operations. After a 1-inch to 2-inch accumulation of snow, crews begin the snowplow operations according to predetermined snow routes. The routes consist of 4 routes with 8 vehicles (2 separate vehicles handle cul-de-sacs and dead ends) and have been carefully designed to allow for the optimum use of the available snowplowing equipment and personnel. All Village-owned streets will eventually be plowed, but main streets are cleared before side streets, which are cleared before cul-de-acs and dead ends. The rate at which the streets are cleared depends on many factors including total accumulation, type of snow (wet or powder-like), temperature and volume of traffic on streets during plow operations.



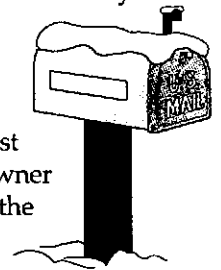
## What Are the Village's Parking Regulations When It Snows?

The Village's winter parking ban takes effect after snowfalls of 2 inches or more. The ban applies to all vehicles on any Village-owned street and is in effect for a period of 24 hours or until the streets have been cleared of snow. Residents can assist Village crews in the snow removal efforts by parking vehicles in driveways or other off-street parking areas.



## What If a Snowplow Damages My Mailbox?

The Village will replace and/or reimburse a resident up to \$50.00 for a mailbox and post which is damaged as a result of the Village snowplow operations, provided the homeowner notifies the Village of the damage, the Village performs an in-house investigation, and the mailbox is installed per Village setback requirements. If you have questions as to whether or not your mailbox is in compliance with Village requirements, you may contact the Village Services Department – Street Maintenance Division at 671-5800.



## Why Does My Driveway Sometimes Get "Plowed In" When a Snowplow Truck Passes?

The Village snowplows are designed to direct the snow to the curb side of the plow blade. "Side delivery plows" are the fastest and most efficient means available to remove snowfall from the streets. As a result, snow is discharged along the length of the curb, the parkways, and the private driveway areas. The Village has thousands of private driveways abutting Village streets, the cleaning of which is the responsibility of the property owner.



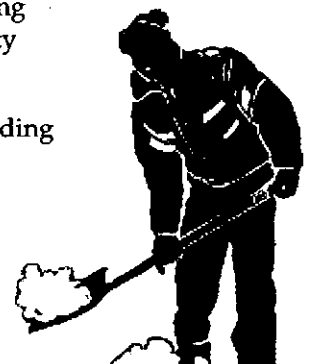
Manpower and equipment limitations prohibit the Village from responding to routine requests to remove snow from private driveways. Therefore, we strongly recommend you delay your schedule for clearing the driveway until the snowplows have cleaned the majority of your

street. **THE VILLAGE ORDINANCES PROHIBIT THE DISCHARGE OF SNOW ONTO THE VILLAGE STREETS.** This illegally placed snow may freeze or become compacted, creating a safety hazard for all motorists.



## Who Do I Call With Questions About Snow Removal Operations?

Any questions regarding snow removal should be directed to the Village Services Department - Public Works Maintenance Division Superintendent at 671-5800.





# Will Soon be Upon Us!

## Wintertime Words to the Wise . . .

### Use extra caution when driving through intersections following a heavy snowfall.

Snow is piled on cross streets when intersections are plowed. Until crews have had their final pass to completely clear the intersection, the snow piles along the curb lane may hinder visibility.

### Please do not attempt to stop the snow plow operators to discuss questions or problems.

Such interruptions slow crews and reduce the speed of the truck and the efficiency of the snow removal operations. Drivers are instructed not to stop to talk to residents.

### If it is still snowing, or if snow is anticipated on the evening before garbage pick-up day, we ask that you delay putting out your garbage for as long as possible.

This will eliminate the problem of garbage containers being covered by snow that is pushed against the curb by the plows. Place garbage containers on the driveway or as close to the driveway as possible to give refuse collectors room to pick them up

### Additional Snow Removal Information

Ornamental rocks along the curb or next to the pavement on non-curb streets present a serious safety hazard to the snow removal equipment. **If residents use rocks or planters for landscape beautification, they need to insure that they are a minimum of three feet in back of the curb or pavement on non-curb streets.** If these obstacles are not removed by the residents, the Village will remove them, if deemed necessary for safe snow removal operations.

### Fire Hydrants

For the convenience of firefighters - if an emergency should occur (maybe at your address), dig a path to the fire hydrant in front of your house **from the street**. Dig out around the fire hydrant too. If firefighters can see a hydrant, they can get to it more quickly. Better yet, adopt a hydrant near your home and see that it is accessible.

### Motorists - Stay Back Three Car Lengths

Do not follow snow plows too closely. Sometimes they stop and then back up. If you're right behind one when that happens, well . . . Give snow plows plenty of space. Also, remember driving on slick wintertime pavements is dangerous, even if they've been plowed. Take more time to get where you're going, begin slowing for stops sooner and, for heaven's sake, don't drink and then try to drive.



## Winter Phone Numbers

**Village of Bloomingdale  
Snow Phone . . . . (630) 671-5800**  
Call this number to report a problem. We regret that it is not possible to advise exactly when your particular street will be plowed.

**Village of Bloomingdale  
Police Department -  
Non-Emergency . (630) 529-9868**  
Call this number for non-emergency general information.

**Bloomington Fire District -  
Emergency . . . . . 911**

**Illinois Department of  
Transportation Information Line .  
. . . 312-DOT-INFO  
(312-368-4636)**

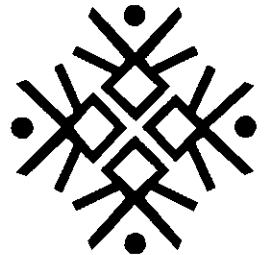
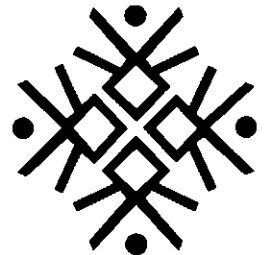
Call this number for information on State roads (i.e., Lake Street)

The Illinois Department of Transportation also offers weather/road condition information on their web site:  
<http://www.dot.state.il.us/tpublic.html>

**Division of Transportation -  
DuPage County . . . 630-407-6920**  
Call this number for information on DuPage County Roads (i.e., Army Trail Road, Bloomingdale Road, Gary Avenue, Schmale Road)

**Illinois Tollway Roadway  
Information Line . . 800-865-5394**  
Call this number for tollway information including problems with fog, snow, ice, high winds and trailer bans. The information is updated every four hours, or more often if weather conditions warrant.

**Weather Information 630-976-1212**



## Winter Water Tips

With winter right around the corner we thought a few tips about your water might be helpful.

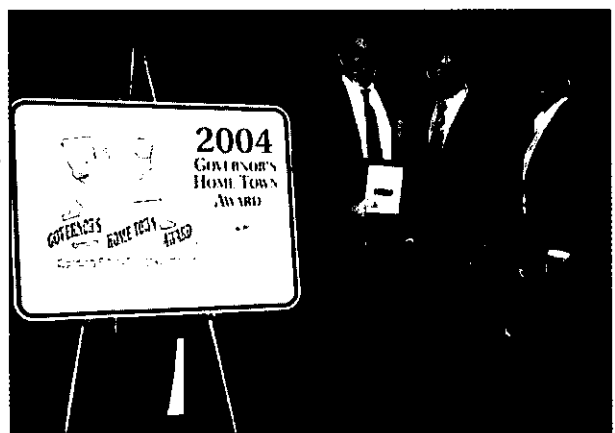
- ❑ Our water comes from Lake Michigan, so seasonal variations in water temperature exist. As the water gets colder, you may consider turning up your hot water heater setting. However, be certain to let everyone in your house know you have done so. This will prevent anyone from accidentally jumping into a scalding hot shower. We all know where we like to turn the faucet controls to get the proper temperature setting for bathing or showering.
- ❑ Turn off any outside hose bibs. Most recently constructed homes have frost-free hose bibs so there is no need to worry about this. If your home has older plumbing, you may need to shut off the hose bib. Typically there is a valve located inside the house near the hose bib location, which isolates the hose bib. Remember to disconnect all hoses from all hose bibs to prevent freezing.
- ❑ Underground lawn sprinkler systems need to be disconnected and properly drained. There are many different types of systems, we suggest you contact the company that installed your system or the manual provided with the system for the proper method of winterizing your system.
- ❑ Extreme cold weather can cause pipes to freeze. The Village's water lines are generally at least 5 feet below ground to prevent freezing. Take some time before the cold weather to get to know the location of your water pipes. For example, if you have water pipes in an outside wall, these are more susceptible to freezing than pipes located in interior walls. During the extreme cold weather, letting a faucet drip or run very slowly, will help prevent freezing. A properly heated home should help prevent freezing problems.
- ❑ Know where your shut off valve is and how it works. The master valve is located by the inside water meter. Typically there are two valves, one on each side of the water meter, either of which will shut off the water to your home. To shut off the water, turn the valve slowly to the right until it stops. Do not force the valve past that point. The Village has a shut off valve commonly called a b-box located outside your home. If you are unable to shut off your water from your master valve, call the Village Services – Utilities Division Monday through Friday 7:30 am till 4:00 pm at 630-671-5830. After hours, our on-call person can be reached by calling the Police Department non-emergency number at 630-529-9868.



## Village Receives Home Town Award for Senior Day Fair

When the Bloomingdale Senior Citizen Advisory Council learned that many in the community were unaware of the services available to senior citizens, they decided to host a fair to showcase these services. The goal was to create a positive interaction between the senior citizens and the service providers. The Senior Citizen Council has already hosted two very successful events.

In a time of reduced public resources, volunteers have organized in many communities to contribute to their town's economic progress and quality of life. The Governor's Home Town Awards Program recognizes the outstanding successes that volunteers have made in their communities in addressing local needs. This is the third time the Village has been the recipient of a Home Town award.



Mayor Iden (holding plaque) and Detective Dawn Odoi were on hand to accept the award in Springfield.

## Notice a Ground Swell or a Constant Flow Of Water? It Could be a Water Main Break

Winter is typically a busy time of year for Public Works crews. Water main breaks occur year round but are more frequent in the winter months. "Water main break" is a term frequently used to describe a variety of underground pipeline failures. The Village water distribution infrastructure consists of approximately 122 miles of water mains, 1750 fire hydrants, 6,000 b-boxes, and 1500 valves to maintain and repair. These are generally located in the parkway in front of your home or in rear yard easements. Most water main breaks are easy to detect as the ground above the leak will swell and a constant flow of water will run out. Repairs are typically scheduled by the severity of the leak with priority given to the safety of the water supply, potential for damage, and inconvenience to the affected customers. Repairs vary in time due to conditions such as weather and conflicts with other utilities. To make a repair the Crew has to shut off the water main. Water is generally off 4 to 6 hours for the average repair. The crews typically knock on the doors of the homes affected by the shutdown unless it's late at night. When the water is turned back on, it may be discolored. This discoloration is generally due to mineral sediments in the watermain that are disturbed from the repairs. This will settle in a short period time. Unless you are specifically notified, the water remains safe to drink or what is commonly called "potable."

To report a watermain break please call the Village Services – Utilities Division at 630-671-5830 during normal business hours Monday through Friday 7:30 am to 4:00 pm. After hours the on-call person can be reached by calling the Police Department non-emergency number at 630-529-9868.

## Be a Safe Holiday Season Shopper

Are you ready for the Holidays? Thanksgiving Day dinner is quickly enjoyed, followed by the Christmas shopping workout. Safety should be carefully considered at all times, but particularly now when so many will be shopping for those large purchases or for those few last minute items. During this hectic time of the year, the following safety measures can help to ensure the protection of your belongings and your personal well being.

### While Shopping:

- Keep your purse/wallet and packages with you at all time.
- Hold your purse close to your body and keep it in front of you.
- Place your wallet, money, etc. in your front pants pocket.
- Don't display large amounts of cash to others.
- Take only the appropriate amount of money, credit cards, or checkbook for the shopping you are conducting.
- Do not leave items unattended in a shopping cart, on a counter, or floor.
- Teach children to go to a cashier if they are lost.
- Be alert and walk confidently. Pay attention to those around you.
- Be careful when giving out your credit card or when using an ATM facility.
- Place all valuables in your trunk. Anything in plain view may be taken.
- Park in well-lighted, busy areas. Consider the time of day or evening that you will be doing your shopping.
- Look around and inside your vehicle before opening your vehicle.
- Any problems, notify the security department or the police department.



### At Home:

- Secure doors and windows at all times. Use timers on lights, radio, and T.V. to make your home appear to be occupied.
- Do not advertise vacation plans with strangers or casually with businesses you may frequent.
- Ask a friend or relative to check on things while you are away.
- Notify the police department of the dates you will be away.

Any questions or concerns about this information or any other crime prevention information please contact Detective Dawn Odoi at the Bloomingdale Police Department at (630) 529-9868.

# Community Events Community Events

## Bloomingtondale Historical Society Sponsoring Poster Contest

The Bloomingtondale Historical Society is sponsoring a poster contest for students ages kindergarten through eighth grade, attending any school, which serves Bloomingtondale. Grade school entries from the three levels (K-1), (2-3), (4-5) should be a poster depicting any part of Bloomingtondale history, whether an event, building, person or collage. Entries from the Junior High level (6,7,8) may depict any of the same, plus a one-page outline of what is depicted in the poster.

Entries must be received at the Bloomingtondale Public Library by January 31, 2005 and become the property of the Bloomingtondale Historical Society.

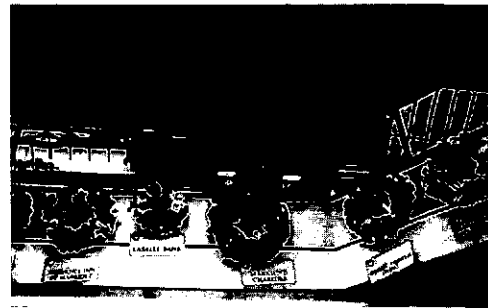
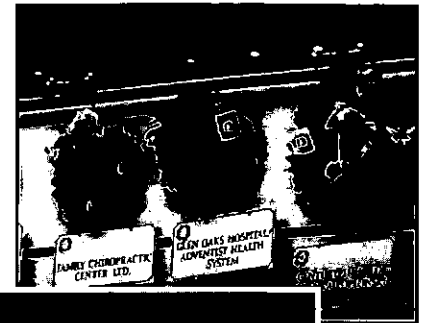
Winners will be announced in March 2005 for the Founders Day event.

Copies of the rules are available from schools, Bloomingtondale Public Library or at the Bloomingtondale Village Hall. Savings bonds will be awarded for first and second place in each level.

Contact the Bloomingtondale Public Library's local History Room at 529-3120, ext. 341 with questions.

## Check Out the Chamber's Wreath Sale at Stratford Square Mall

The Bloomingtondale Chamber of Commerce invites everyone to stop by Stratford Square Mall to purchase a beautifully decorated holiday wreath. These wreaths were donated by chamber members to help support the Chamber and its programs. To purchase a wreath, simply select your favorite from the display in Center Court at Stratford Square Mall. Take the order form out of the master book in Center Court over to the Customer Service Desk (lower level between Carson's & Burlington's) to pay for your wreath. Wreaths will be on display until Wednesday, December 15th, but can be taken down and delivered prior to that date.



Proceeds from this wreath sale will benefit the Bloomingtondale Chamber of Commerce, its programs, and events, including its annual scholarship program. For more information, contact Andrea at the Bloomingtondale Chamber of Commerce at (630) 980-9082.

## Villagers to Host Concert, Cookie Exchange on December 2

The Villagers Club of Bloomingtondale hosts a holiday evening with a concert and cookie exchange on Thursday, December 2 at 6:30 p.m. at the Bloomingtondale Public Library. And after that terrific holiday season, the Villagers will be anticipating their February 3 meeting where representatives from "Curves" will be talking to them about a "Healthy Lifestyle." For more information on the Villagers or their meetings, call Bette Torpe at 924-6861.

## Women's Club Planning Holiday Get Together on December 9

The Bloomingtondale Women's Club invites all area women to a holiday get together featuring piano music of Judy Blackwell and a gift exchange at 6:30 p.m. on Thursday, December 9 on the lower level of the Bloomingtondale Public Library, 101 Fairfield Way. The January 10th meeting features the Bloomingtondale Fire Department speaking on Winter Safety at 7 p.m. at the library. For more information, call Mary Rose at 980-1173.

## 'Hub Arkush, Voice of Bears Radio, at Jewel on December 10

On Friday, December 10, Hub Arkush, voice of Bears Radio, will be on hand 5-7 p.m. at the Jewel Osco, Bloomingtondale & Army Trail roads, to conduct auditions for junior broadcaster for youngsters ages 7 to 13. Each child must fill out an entry form; one entry form will be selected randomly by gender.

Two grand prizes will be awarded, one male & one female. Winners will each receive: four tickets to the December 19 Bears game; a pre-game interview on SCORE; a tour of WBBM's Broadcast booth before game; and an appearance by the Chicago Bears mascot, Stanley at his/her school. The event is sponsored by the Midwest Dairy Association.

## Seasonal Sharing Opportunities

**Bloomington Township Sharing Tree – Township Transportation Building, 123 Rosedale Road**

Names & wishes of local needy youngsters and residents of convalescent and nursing homes.

Wrapped gifts to be returned by Friday, December 10.

**Marklund Children's Home residents – Bloomington Park District, 172 S. Circle**

Name of child or adolescent, something about him/her and suggested gift ideas  
 Wrapped gift with recipient's name to be returned to Park District or Marklund, 164 S. Prairie by Friday, December 10.

**Salvation Army Angel Tree – Join employees of Bloomington Village Hall, 201 S. Bloomington**

Name, age (3-5 yrs), gift needs & toy desires

**Emergency Lodge Headstart Childcare Program in Chicago**

Return unwrapped gift with tag to Village Hall by December 15

If you'd like to be sent a tag, please call Barb at 671-5613

## Welcome New Businesses!

Three new businesses, all located in Springbrook Shopping Center, are featured this issue.

Artist Matt Puchalski recently recreated a new series of limited edition Giclee prints depicting prominent Chicago landmarks. "I use highly saturated color to create a rhythm in my paintings that captures the energy of the city," says Puchalski.

Puchalski is a recent graduate of the American Academy of Art in Chicago and also owner of **Masterpiece Framing**, his own art gallery and frame shop located at 156A E. Lake Street. His showroom has over 1,000 frame and mat samples to choose from. The 23-year old notes that, owning a gallery has proven to be a great way to display and promote his art. He also frames and displays paintings and photography for other local artists.

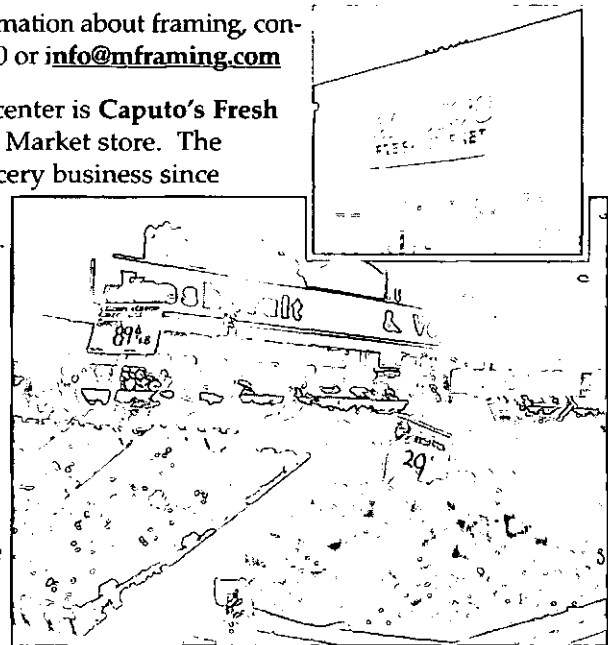
To purchase prints or for more information about framing, contact Masterpiece Framing at 893-4390 or [info@mframing.com](mailto:info@mframing.com)

Another welcome addition to the center is **Caputo's Fresh Market** in the former Springbrook Market store. The Caputo family has been in the grocery business since

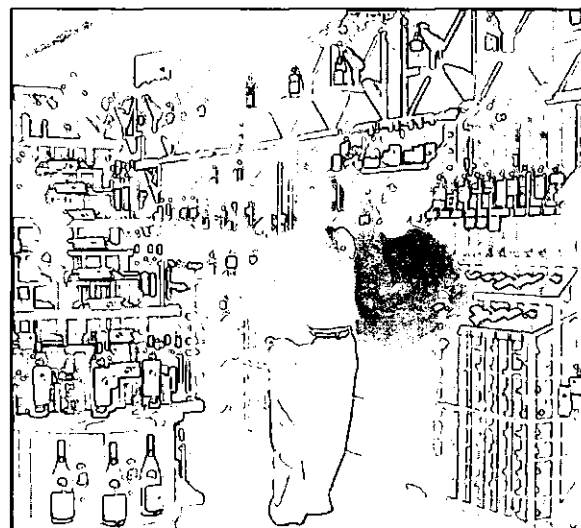
Angelo Caputo started his first business in 1958 in Elmwood Park. Caputo's enjoys a reputation for quality meats, the freshest fruits and vegetables around, and wonderful pastries, made from the recipes of Romana Caputo.

According to Angelo's son-in-law and CEO, Robertino Presta, they will be opening up the unused spaces of the building to expand the product area and bring the Bloomington store in line with the Hanover Park and Addison stores.

As Bloomington residents, the family is excited to serve their Bloomington friends and neighbors. Caputo's is open until 10 p.m. seven days a week. The phone is 924-0900.



**Spring Wine and Spirits** opened next to Caputo's just before Thanksgiving. The



Patel and his manager Mark Goldman stand ready to serve you.

upscale wine shop offers an incredible variety from which to choose. Owner Piyush Patel has stocked more than 200 varieties of beer, and nearly 1000 varieties and brands of wine. He also features a top of the line liquor selection.

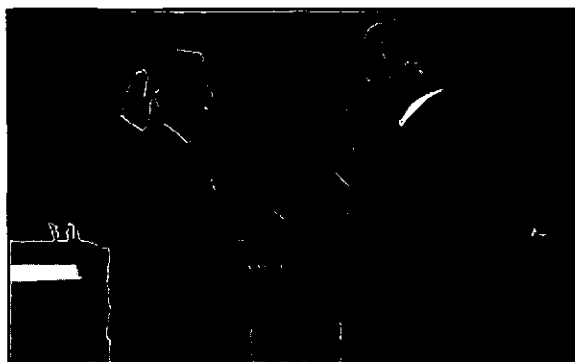
In addition, you can also find an assortment of gourmet foods and cheeses, as well as a humidor with a fine selection of cigars. The establishment will soon be hosting wine and cheese tastings. Spring Wine & Spirits is open 10 a.m. – 9 p.m. Call 630-894-WINE (9463) for more information.

### Congratulations to the 9th Annual Recognition Dinner Honorees

On Friday, November 5 the Bloomingdale Parks Foundation took time out to honor outstanding volunteers from our community. Attendees enjoyed dinner, music, a raffle, and entertainment. Honorees were as follows: Carla and Steve Murray from the Bloomingdale Barracudas Swim Team; Barb and Dale Druke from the Youth Basketball Association; Mark Percudani from the Bloomingdale Baseball & Softball Association; Dan Meyo from the Bloomingdale Athletic Club (Youth Football and Cheerleading); Sue & Rich Horgan from Bloomingdale Park District Gymnastics; and Lisa Lindsey and James Lively from the Bloomingdale Soccer Association. Congratulations to all of the honorees!

### Danielle Torres in Miss USA Pageant

Eighteen-year old Danielle Torres recently competed for the title of Miss Illinois USA at the Hyatt Regency McCormick Place. The daughter of Laura & Deno Vercillo is a graduate of Lake Park High School. She is currently studying to be a teacher at the College of DuPage.



### Village Welcomes New Police Officer

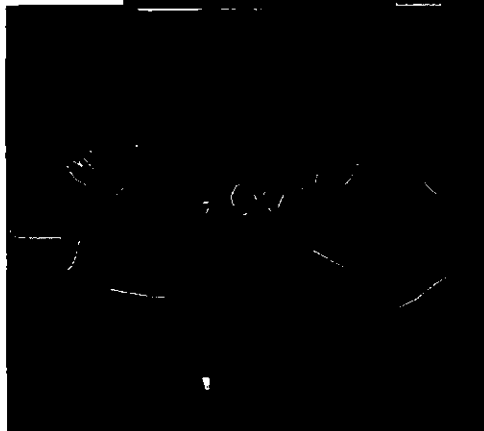
Steven Giancaterino was recently sworn in as a police officer by Mayor Bob Iden. Our newest patrol officer attended the Suburban Law Enforcement Academy at College of DuPage, where he was elected vice president of his class. Steve is currently on field training with our seasoned officers and will be on his own at the beginning of January.

### Four Students Honored with American Youth Character Awards

Four students were presented with American Youth Character Awards October 19 by Bloomingdale Mayor Bob Iden at a CHARACTER COUNTS! Week celebration in Old Town Bloomingdale: (from left) Bloomingdale CHARACTER COUNTS! Coalition co-chair Randy Sater, Kimberly Neary of St. Isidore, Morgan Meyer of Westfield, Alexandria Jurczewski of DuJardin, Sarah Periaswamy of Erickson, and Mayor Iden.

The evening began with a charity walk to benefit the American Red Cross, which was selected through an essay contest won by Spruha Shah and Corinne Laird of Westfield Middle School.

Sater served as emcee, and the Bloomingdale Veterans of Foreign Wars and the Bloomingdale Cub Scouts led the Pledge of Allegiance. Entertainment was provided by the Westfield Middle School Band and Chorus, the Winnebago Choir, Erickson Third Grade, St. Isidore School, and DuJardin's Peer Mediators. The evening concluded with all students doing the CHARACTER COUNTS! Shuffle.





# Bloomington Fire Protection District #1



Administrative Offices  
179 S. Bloomington Road  
Bloomington, IL 60108  
(630) 894-9080  
FAX (630) 894-8720

Chief Tim Marrocco *District Trustees*

President, Marshall L. Gray, Jr.  
Ralph Scalise, Secretary  
Lydia DiBuono, Treasurer

*Commissioners*

Michael McKeon  
Jac L. Williamson  
Franco Coladipietro

## Holiday Decorations

Electrical decorations and strings of lights can help brighten the holiday season, but misusing or using damaged decorations may lead to dangerous situations—including injury from shock or fire.

Many people are unaware that December, January, and February are the leading months for home fires and home fire deaths in the United States. According to the NFPA, more than one-third of home fire deaths in the U.S. occur during the winter months.

The safety experts at Underwriters Laboratories Inc. (UL) and the National Fire Protection Association (NFPA) encourage you to use this handy checklist when decorating your home this holiday.



- Does your live tree or greenery have fresh green needles?
- Is your tree a safe distance (at least three feet) from fireplaces, radiators, space heaters, heating vents, and other sources of heat? Is it blocking an exit?
- Do you use light strings that carry the UL Mark?
- Before plugging in newly purchased electrical decorations, or those you've used previous seasons, do you carefully inspect each decoration?
- Do you unplug light strings and electrical decorations before replacing light bulbs or fuses?
- Do you keep light strings and electrical decorations away from the reach of children?
- Do you check for red or green UL Marks on your light strings? - the green holographic UL Mark means that the light string should only be used indoors. The red holographic UL Mark indicates the light string can be used both inside and out—and can withstand conditions related to outdoor use.
- Do you turn off electrical light strings and decorations before leaving your home or going to bed?
- Have you made sure your home is equipped with working smoke detectors?
- Have you developed a fire escape plan for your household?

If you answered "yes" to all of these questions, congratulations! If you answered "no" to any of these questions, you owe it to yourself and your loved ones to correct the electrical hazards in your home.

## Holiday Entertaining



- Keep young children at least three feet away from kitchen appliances when cooking.
- Dress correctly for cooking. Wear short or tight-fitting sleeves and use caution when working near heat sources.
- Have plenty of fire-resistant potholders and oven mitts ready to use when cooking.
- Keep stovetop clean and clear. Store combustible materials away from heat sources.
- Turn off and unplug all appliances when not in use. Periodically check on food being cooked in an oven, microwave, or on the stove.
- Use caution when using electrical appliances. Never plug more than one high voltage appliance into

a single outlet.

- Check appliances for frayed or cracked cords.
- Never stand in or near water when using electrical appliances.
- Have your chimney inspected by a professional at least once a year and have it cleaned if necessary. Always use a fire screen and only burn material appropriate for fireplaces. Never burn trash or paper in a fireplace; burning paper can float up your chimney and onto your roof.
- Be sure to place candles in sturdy, non-combustible holders, and keep them well away from decorations and other combustible materials. Check candles frequently to make sure they don't burn down too far.
- Do not leave children unattended in a room with lit candles and always keep candles, as well as matches and lighters, out of the reach of children.
- Do not display lit candles in windows or near exits in case you need these to escape.
- Under no circumstances is it safe to use lit candles to decorate Christmas trees.

**THE MEN AND WOMEN OF THE BLOOMINGTON FIRE PROTECTION DISTRICT #1 WISH YOU AND YOUR FAMILIES AND SAFE AND JOYOUS HOLIDAY SEASON.**

# Off the Shelf



## BLOOMINGDALE PUBLIC LIBRARY NEWSLETTER

101 Fairfield Way, Bloomington, IL 60108  
Home page: [www.bloomington.lib.il.us](http://www.bloomington.lib.il.us)

Phone: 630-529-3120  
E-mail: [bdref@linc.lib.il.us](mailto:bdref@linc.lib.il.us)

### BOARD OF TRUSTEES

Alice Spanos	President
Bonni Rothbaum	Vice President
Milton Clark	Secretary
David Strutzel	Treasurer
LeRoy Gaertner	Trustee
Elaine Mitchell	Trustee
Linda Szramiak	Trustee
Timothy Jarzemsky	Library Director
Peggy Carlson	Adult Services Department Head
Annamarie Erickson	Local History Coordinator
Brian Meyer	Computer Department Head
Madeline Reed	Youth Services Department Head
Melissa Willer	Circ./Tech. Department Head



### from the director . . .

As we approach the holiday season let me extend my warmest greetings. I know the holidays can be quite frantic and I invite you to spend some of your free time reading with your loved ones. Make sure to fill your home with classic holiday books and films from your library. In celebration of the season all feature films and DVDs will be free from the usual \$1 charge from December 20 through January 3. You might also want to take a look at the many and varied programs you will find listed in the following pages. The Bloomington Public Library remains the cultural center of a vibrant community.

This past year has been very eventful. We completed a new parking lot, added many databases and finished our Long Range Plan. The Long Range Planning Committee identified technology leadership as one of our key strengths. In furthering that goal I am proud to announce that beginning December 1, residents will have access to wireless Internet. Patrons with wireless enabled laptops may simply bring in their computers and connect. This cost saving service extends Internet throughout the building without adding expensive wiring. Patrons with wireless laptops will also have the ability to use our databases to save files directly onto their own computer. Thanks for all your support this past year and I look forward to the challenges of 2005.

Best wishes for a Happy Holiday.

### Long Range Plan Document Available

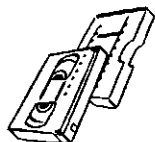
Make sure to pick up a copy of our "Plan for the Future" document. This 16 page color brochure reflects the hard work and vision of a dedicated community based Long Range Planning Committee. Take a look and see what your library will strive to achieve over the coming years.



## HOLIDAY HOURS



December 23	Library closes at 5:00 p.m.
December 24	<b>LIBRARY CLOSED</b>
December 25	<b>LIBRARY CLOSED</b>
December 26	<b>LIBRARY CLOSED</b>
December 27	9:00 a.m. - 9:00 p.m.
December 28	9:00 a.m. - 9:00 p.m.
December 29	9:00 a.m. - 9:00 p.m.
December 30	Library closes at 5:00 p.m.
December 31	<b>LIBRARY CLOSED</b>
January 1	<b>LIBRARY CLOSED</b>



## HOLIDAY VIDEO AND DVD SPECIAL

To wish you a happy holiday there will be a special from December 20 - January 3. Three videos and three DVDs per card may be checked out free during this period, with a limit of one checkout per day.





# Youth Services Department WINTER YOUTH PROGRAMS

## PROGRAM REGISTRATION

Registration is required for the following programs, unless noted otherwise.  
Register in person at the Youth Services Desk or call the Youth Services Department at 529-3120, ext. 332.  
*Please have your library card ready when you come in or call.*



### CHESS CLUB

Ages 8 and up

Registration is not required.

Mondays

4:00 p.m. - 5:45 p.m.

If you are eight years of age or older and know a little or a lot about the game, this is your chance to sharpen your skills.



### AMERICAN GIRL HOLIDAY TEA

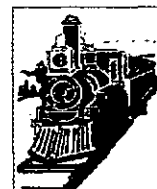
Grades 3 and up

Sunday, December 12

2:00 p.m. - 3:30 p.m.

Registration is required.

This is a special afternoon set aside for girls and their dolls (any kind) or teddy bears. Dress up and come to enjoy an afternoon of holiday treats, holiday music, holiday table decorations, and some conversation with other girls in grades three and up. We'll also watch a video of Felicity's tea party at Miss Mandery's. Sign up with a friend and/or sibling for this special holiday party for girls.



### ALL ABOARD THE POLAR EXPRESS LIBRARY TRAIN

Grades K and up

Tuesday, December 14

6:30 p.m. - 7:30 p.m.

Registration is required.

'Tis the season of believing. Join us for a magical evening of activities. We'll listen to the story, play games and enjoy Polar Express treats. A bag full of Polar Express goodies will travel home with you. *Children may come in their pajamas.*



### SEARCH HOMEWORK CLUB

Ages 9 - 14

Mondays 6:30 - 7:30

(January 10 - May 23)

Wednesdays 3:30 - 4:30

(January 12 - May 25)

Registration is not required.

Need a place to study? Not sure how to find what you need in the library? We are proud to announce a new club to help you use the library for your schoolwork. Twice a week we will have a room available complete with snacks, table space, and the help of a librarian. If you have a paper coming up and need to do research, a group project and you are looking for a space to meet, or a place with a table big enough to work on your posters we have the spot for you. Remember, this is not a tutoring service, but rather a place and time for you to get help using the resources the library has available. You don't need to register, just drop by with your homework, your own supplies, and a willingness to work.

## WINTER READING PROGRAM 2005



### "I'VE BEEN READING ON THE RAILROAD"

(Family Reading Program for Parents and/or Caregivers and their Infants, Toddlers, Preschoolers, and Kindergartners.)

Chugga, Chugga, READ! All aboard for books and winter fun in this reading program designed for children who have not yet entered first grade. Register in person at the Youth Services Desk to receive your information packet, beginning January 3rd. Completed reading logs may be turned in at the Youth Services Reference Desk between January 17th and February 19th to enter the GRAND PRIZE DRAWING.



### "READ TO SUCCEED"

Sponsored by

the Chicago Wolves Hockey Team

(1st - 8th graders)

Participants in this reading program have the chance to win exciting prizes, such as Chicago Wolves merchandise! Register in person at the Youth Services Desk to receive your information packet, beginning January 3rd. Completed reading logs may be turned in at the Youth Services Reference Desk between January 17th and February 19th to enter for the GRAND PRIZE DRAWING.

## UNFORTUNATE WEEK OF LEMONY SNICKET

All ages

December 11 - December 17

Caution! Do not come to the library this week if you want to have any fun whatsoever. If you do risk the trip, you may win some pathetic prizes. If you play the Terrible Trivia contest about the Series of Unfortunate Events, you may win a gloomy gift certificate to the theater to watch the movie. Stay away from guessing how many Lousy Lemon-y Drops are in the jar or you may win a 2005 Calendar of Unfortunate Events. This truly unfortunate week is scheduled to take place December 11th through December 17th - the day the fateful film is released in theaters.

## TRAVELING THEME TOTES

Has the winter weather forced you to stay inside? Bored, nothing to do? Check-out one of our traveling theme totes. The bags contain books, activities, and interesting surprises. Currently there are seven totes available for a three week check-out. The themes include animals, babies, feelings, food/farm, indoor fun, relatives and toilet training.

## Youth Services Department

# WINTER YOUTH PROGRAMS

### REGISTRATION INFORMATION/REQUIREMENTS FOR WINTER STORYTIME PROGRAMS

Bloomington Library cardholders may register for storytimes at the Youth Services Reference Desk, or by telephoning (630) 529-3120 ext. 332. Please have your library card when you register.

Please note that selected programs are open to Bloomington Public Library cardholders only. We regret that we cannot accommodate non-resident attendance at all programs. Please refer to the registration information provided for each program.

All programs, except Bedtime Stories and Family StoryTime, require registration and siblings may not attend registered programs.

The following age appropriate programs are intended for the registered child. Please make alternative arrangements for siblings.

*Winter Programming begins the week of January 17*

*Winter Programming ends the week of February 21*

### STORYTIMES

*Programs for children ages three months through 5 years.*

*Registered storytimes are limited to Bloomington Public Library cardholders only.*

#### ROMPER RHYMES (3 months - 15 months)

Tuesdays, January 18 - February 22

9:45 a.m. - 10:30 a.m.

The best way to start "reading" to infants is not really reading at all! Romper Rhymes is a language-enrichment program in which nursery rhymes, songs, and fingerplays are shared with babies and their caregivers. The program is designed to engage parents/caregivers and children in a bonding experience while allowing participants to meet other caregivers and share information. Bring only the child that is registered. Please make other arrangements for siblings.

#### BUDDING READERS (16 months - 23 months)

Tuesdays, January 18 - February 22

11:00 a.m. - 11:30 a.m.

Budding Readers is a transition class designed to prepare toddlers for our two year old storytime. Children and their parents/caregivers will enjoy nursery rhymes, songs, and fingerplays in addition to stories and flannel boards. Bring only the child that is registered. Please make other arrangements for siblings.

#### TIME FOR 2'S (24 months - 35 months)

Wednesdays, January 19 - February 23

10:00 a.m. - 10:30 a.m.

Time for 2's is a storytime for children two years old accompanied by a parent or caregiver. This program is designed to help children develop listening skills, and features stories, flannel board interplay and musical activities. Please make other arrangements for the care of siblings, so that the parent/caregiver may be able to share this special time with his/her child.

#### PRESCHOOL STORYTIME (ages 3 - 5)

Mondays, January 17 - February 21

10:00 a.m. - 10:45 a.m.

Thursdays, January 20 - February 24

1:30 p.m. - 2:15 p.m.

Preschool Storytime includes a variety of book sharing, flannelboard stories, videos, and musical activities. In order to foster the child's independence, parents/caregivers and siblings are asked to remain outside the program area during the storytime. This program is limited to preschool age children. For those children going into Kindergarten, please see Primary Connections program information.

#### PRIMARY CONNECTIONS (K - 1st)

Mondays, January 17 - February 21

4:15 p.m. - 5:00 p.m.

Primary Connections is a six week program for the child who has outgrown preschool storytime, but not outgrown the library. The children will enjoy a fun-filled session of stories, crafts, and musical fun selected for their newly developing skills. In order to foster the child's independence, parents/caregivers and siblings are asked to remain outside the program area during the storytime.



### DROP-IN STORYTIMES

*The following storytimes do not require registration.*

#### FAMILY STORYTIME (All ages)

Fridays, January 21 - February 25

10:30 a.m. - 11:00 a.m.

Family Storytime is designed to serve families with babies, toddlers and preschoolers who want to attend morning storytime together. Children will enjoy a variety of book sharing, flannel stories, musical activities and/or puppets during these sessions.

#### BEDTIME STORIES (All ages)

Tuesdays, January 18 - February 22

7:00 p.m. - 7:45 p.m.

Bedtime Stories is designed to serve families with babies, toddlers and preschoolers who are unable to attend daytime sessions.  
**FEEL FREE TO COME IN YOUR PAJAMAS!**

**Adult Services Department**  
**WINTER ADULT PROGRAMS**

**BOOK DISCUSSION GROUP NEWS**

New members are always welcome! Books are available about one month in advance at the Adult Reference Desk. Any questions, please call 529-3120 ext. 324.

**Adult Book Group**

Meets at 7:30 p.m. on the third Thursday of the month and the previous Wednesday morning at 10:00 a.m.

January 19 and 20 - *Reading Lolita in Tehran* by Azar Nafizi  
 February 16 and 17 - *The Curious Incident of the Dog in the Night-time* by Mark Haddon

**Historical Book Group**

Meets from 10:00 - 11:30 a.m. on the first Tuesday of the month.

January 4 - *The Beecher Sister* by Barbara A. White  
 February 1 - *Cold Mountain* by Charles Frazier



**WRITE ON!**  
**Wednesday, December 15**  
 6:30 p.m. - 8:00 p.m.

Have you always wanted to write a book or story and had no idea where to start? Local author Stacey Klemstein will share her experiences with aspiring writers and get them on the right track. This session will include tips on finding the right story idea, creating characters and developing a writing routine that's right for you. Bring any questions you may have about writing and/or getting your ideas published.



**ELDER LAW**  
**Monday, January 10**  
 6:30 p.m. - 8:30 p.m.

More adult children are facing tough decisions regarding care of their aging parents. Local attorney John Pankau will cover issues relating to these hot topics: Medicare and Medicaid, nursing homes and assisted living, guardianships, powers of attorney, incapacity and driving. Come and learn about the choices available regarding your aging loved one.



**THE WHITE CITY**  
**Sunday, January 23**  
 2:00 p.m. - 3:30 p.m.

Have you read Erik Larson's *The Devil in the White City*? Do you want to learn more about the fair that captured the imagination of both Chicago and the world over 100 years ago? Join us as a historical programmer, Susan Chemler, shares slides and memorabilia from the Columbian Exposition of 1893.



**CALLING ALL CHOCOLATE LOVERS!**  
**Monday, February 7**  
 6:30 p.m. - 8:30 p.m.

'Tis the season for chocolate - and there is no shortage of that in this program! Chef Jonathan Bean will share a number of delicious recipes that you can take home to impress your family and friends. Audience members will not only get to enjoy his witty presentation, but also the finished products! **There is a \$2.50 tasting fee for this program due upon registration. Please register in the Business Office. Bloomingdale residents have registration priority. Maximum of 40.**



**MOTHER/DAUGHTER BOOK CLUB**

**(Grades 4-8)**

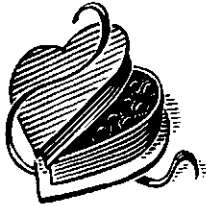
Join us for lively conversation about literature and life! This book discussion group for girls in grades 4 -8 and their moms or special female friend will meet for three Sunday afternoons this winter. Come to an Informational Meeting to learn more about this popular discussion format, to pick up the first title, and to vote on future titles. Register now at the Youth

Services Reference Desk in-person or by phone at (630) 529-3120 ext. 332. If you are unable to attend the Informational Meeting, please let us know and our program instructor will contact you with details.

<b>Informational Meeting</b>	<b>Tuesday, January 18</b>	<b>7:00 - 7:30 p.m.</b>
<b>First Discussion</b>	<b>Sunday, February 20</b>	<b>2:00 - 3:00 p.m.</b>
<b>Second Discussion</b>	<b>Sunday, March 20</b>	<b>2:00 - 3:00 p.m.</b>
<b>Third Discussion</b>	<b>Sunday, April 17</b>	<b>2:00 - 3:00 p.m.</b>

**Adult Services Department**  
**WINTER ADULT PROGRAMS**

**TEEN PROGRAMS**



**VALENTINE TREATS**

(6th - 12th grades)

**Thursday, February 10**  
**6:30 p.m. - 7:30 p.m.**

Learn how to make some fun and special treats for your valentine this year. You can sample the demonstrations and then take home the recipes to make your own delicious valentine goodies. Registration is limited to 15 participants. To register call 529-3120 ext. 324, or stop by the Reference desk.



**TEEN BOOK CLUB**

(7th - 12th grades)

**Thursday, February 24**  
**6:30 p.m. - 7:30 p.m.**

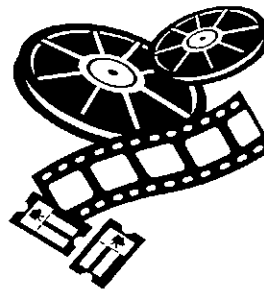
Do you love books? Would you like to get together with other teens who enjoy reading and discuss interesting or unusual books in a relaxed atmosphere with drinks & munchies? If the answer is "Yes!", then call 529-3120 ext. 324 to sign-up for the first club meeting and help us pick out the great books we will read.



**VOLUNTEERS**

**Grades 7-12**

Are you interested in gaining job experience, earning service hours for school and other organizations, and making a difference in your community, all while having fun at the library? Bloomingdale Public Library's VolunTEEN program enables students to do all of the above in a volunteer position with the library in which students are scheduled 2 - 4 hours per month assisting the Youth Services library staff. If you are a student in grades 7 - 12 and are interested in volunteering during the school year, please register at the Youth Services Desk or call (630) 529-3120 Ext. 332. There are a limited number of positions available, so stop by or call today!



**TEEN WINTER**  
**FILM SERIES**

(6th - 12th grades)

Warm up with hot chocolate and fill up on yummy treats while you and your friends relax and enjoy these great Hollywood flicks.

**December movie - ELF**

**Thursday, December 16**  
**6:30 p.m. - 8:30 p.m.**

**January movie - GOONIES**

**Thursday, January 13**  
**6:30 p.m. - 8:30 p.m.**

Register at the Reference desk  
or call 529-3120 ext. 324.

**ADOPT-A-MAGAZINE**

The Bloomingdale Public Library is conducting its annual Adopt-A-Magazine drive to help maintain and expand the periodicals collection. If you would be interested in making a financial donation, please contact Peggy Carlson at 529-3120, ext. 328 for more information and a list of suggested magazine titles.

**PEP VOLUNTEERS NEEDED**

Join the People Educating People (PEP) Volunteer Program from College of DuPage as a volunteer classroom aide. Aides help adult students learn English as a Second Language (ESL), reading, writing or basic math. Day, evening and weekend classes for ESL and GED are held throughout DuPage County. Bilingual skills are needed only for Spanish GED. Training is planned for summer 2005. Anyone who already possesses training is urged to apply now. For more information, call Joan Morris at (630) 942-3788.

# WINTER PROGRAMS

## ADULTS COMPUTER COURSE

*Please note: A \$60.00 deposit is required for this course.*

Monday, January 3	2:00 p.m. - 4:00 p.m.
Tuesday, January 4	2:00 p.m. - 4:00 p.m.
Monday, January 10	2:00 p.m. - 4:00 p.m.
Tuesday, January 11	2:00 p.m. - 4:00 p.m.
Monday, January 24	2:00 p.m. - 4:00 p.m.
Tuesday, January 25	2:00 p.m. - 4:00 p.m.

Instructor: Sean

This six-session course will cover a wide range of computer topics. It is intended to give students a strong foundation in computing, teaching them general computer/Windows principles, using the Internet, and familiarity with Microsoft Office products. The skills learned here will help to prepare the student for whatever computing task interests them. Please see the following Course Outline for more information.

### ADULTS COMPUTER COURSE OUTLINE

#### **Sessions 1 and 2:**

Very basic introduction to computers and how we use them. Topics such as learning how to use disks and CD-ROMs, becoming comfortable with the mouse, using windows, and running programs.

Discussion will continue over first two classes with recommended practice exercises given after both session 1 and 2.

#### **Sessions 3 and 4:**

These two classes will introduce participants to using the Internet. Basic understanding of connecting and using the World Wide Web will be covered as well as more detailed E-Mail questions and introducing more complicated Internet topics such as downloading, searching, and using multimedia products online (music, movies, games, etc.).

The third class will cover most of the topics covered in "Introduction to the Internet and E-Mail" with a few changes to better suit the class. In the fourth session we will fill in E-Mail and Browser details missing from the third session and begin with the complicated topics discussed above.

#### **Sessions 5 and 6**

The final two sessions of this course will introduce the Microsoft Office Suite, paying particular attention to MS Word but also introducing products such as Excel, Power Point, and Publisher, while discussing the Office environment. These classes should provide enough comfort to get started in any MS Office program.

*Computer classes are recommended for ages 13 and older. There is a \$10.00 refundable deposit for each class, due at the time of registration. Classes are limited to twelve participants. Residents of Bloomington will be placed in the class (if space is available). Non-Residents will be placed on a waiting list and will be contacted if space becomes available. Residents on the waiting list will be given priority over non-residents on the waiting list. Please register in the Business Office of the Library beginning December 6, 2004. Deposits will not be refunded unless cancellation is made at least 24 hours in advance of the class start time.*



### USING THE INTERNET

**Monday December 13, 2:00 p.m. - 4:00 p.m.**  
Instructor: Sean

This course will cover from the most basic Internet questions and topics to more intermediate material such as search engines and downloading. This class is intended for those with little or no computer experience.

### USING EMAIL

**Tuesday December 14, 2:00 p.m. - 4:00 p.m.**  
Instructor: Sean

This class will introduce the students to creating an Email address, performing basic functions, and more advanced procedures such as using attachments and managing folders. (Having taken "Using the Internet" is recommended.)

### INTRODUCTION TO EXCEL

**Wednesday December 15, 6:30 p.m. - 8:30 p.m.**  
Instructor: Sean

This class will cover the basic concepts creating and using spreadsheets. (Having taken "Introduction to using Microsoft Word" or equivalent experience is recommended.)

### USING THE INTERNET 2

**Monday December 20, 2:00 p.m. - 4:00 p.m.**  
Instructor: Sean

In Using Internet 2 we will add to and expand on the issues covered in Using the Internet. Topics such as browser options, adding links, downloading, advanced searching, high speed Internet access, and more will be covered. (Having taken Using the Internet or similar experience is recommended.)

## Computer Lab

# WINTER PROGRAMS

### USING EMAIL 2

Tuesday December 21, 2:00 p.m. - 4:00 p.m.

Instructor: Sean

Using Email 2 takes users beyond the basics of sending and receiving Email and teaches them to take advantage of the many features their Email services provide. Topics such as attachments, folders, address books, mail options, spam protection, and more will be covered. (Having taken Using Email or similar experience is recommended.)

### INTERMEDIATE EXCEL

Wednesday December 22, 6:30 p.m. - 8:30 p.m.

Instructor: Sean

This class covers more advanced topics in Excel such as formulas, graphs and linking between multiple worksheets. (Having taken "Introduction to Microsoft Excel" or equivalent experience is recommended.)

### ADVANCED EXCEL

Wednesday December 29, 6:30 p.m. - 8:30p.m.

Instructor: Sean

This class will provide a deeper investigation of Excel topics introduced in the Intermediate Excel course, as well as examining other functions provided by Excel. (Having taken "Intermediate Excel" is recommended.)

### UNDERSTANDING YOUR COMPUTER 1

Wednesday January 5, 6:30 p.m. - 8:30p.m.

Instructor: Sean

This class is the first of three sequential courses in which we will cover more advanced topics than those discussed in Understanding Windows or Introduction to the PC. This class will continue over three sessions and will allow more time for explanations. Topics to be covered include: Windows functions such as using/installing software, finding and organizing files, and more. We will also discuss basic hardware ideas and how to use disks, CDs, and the hard drive. (Having taken "Understanding Windows" is recommended.)

### UNDERSTANDING YOUR COMPUTER 2

Wednesday January 12, 6:30 p.m. - 8:30p.m.

Instructor: Sean

Class will cover more advanced Windows topics such as changing settings, manipulating/customizing toolbars, properties screens and startup/recovery disks. (Having taken "Understanding Your Computer 1" or equivalent experience is strongly recommended.)

### UNDERSTANDING YOUR COMPUTER 3

Wednesday January 26, 6:30 p.m. - 8:30p.m.

Instructor: Sean

The Final session of Understanding Your Computer will cover more advanced hardware topics. Learning to install, remove, and update components of the computer will be covered as well as understanding the basics of how they work. Understanding device drivers and why they're important will be covered. (Having taken "Understanding Your Computer 1 & 2" is strongly recommended.)

## LOCAL HISTORY DEPARTMENT NEWS

Barbara Sondalle, librarian in the local history department and also former board member, recently celebrated her retirement. Her contributions to the department were many, including documenting local cemetery records from St. Isidore's and St. Paul's, and helping to organize many of the files regarding local citizens and organizations. Best wishes to Barbara!

Are you interested in researching your family tree? Join Annamarie Erickson for informal help every fourth Thursday of the month from 6:30 - 8:45. The next meeting will be January 27.

Volunteers are needed to help with various projects in the local history department. For information, please contact Annamarie at 529-3120, ext.341.

## READERS' SERVICES DESK AT THE LIBRARY!

Have you stopped by the Readers' Advisory Desk at the library? Since November 2003, staff at this desk have been available to help patrons looking for a special title. For example, are you on a waiting list to read the latest best seller? The Readers' Services staff has suggestions of other books to read while you're waiting. Or, if you would like to know when an author's next book is due out or just want a suggestion for a good book, stop by. We would love to help you!

## BLOOMINGDALE HISTORICAL SOCIETY INVITES NEW MEMBERS

The Bloomingdale Historical Society would like to invite the public to attend their general meetings held on the first Monday of the month at 7:30 p.m.

## AUTOMATIC HOLD PROGRAM

Do you like to read the next new book by a particular author? Many fiction authors are part of our popular Automatic Hold program. When you sign up for participating authors, we will automatically put a hold on these new titles for you. Please stop at the Reference or Readers' Services desk for more information.

# Bloomingtondale Park District

*We're right around the corner!*

## Check Out These Great Winter Programs!

### Magic of the Season Holiday Open House

December 11, 12:00-3:30pm, JRC

Join us for a magical time packed full of FREE memorable holiday fun! You and your family will walk through our enchanted forest full of lights, meet Santa's helpers as you discover two live reindeer, take a horse-drawn carriage ride, and experience the awesome technique of Mr. Taps, the tap dancing wonder! Don't miss performances from our singing preschoolers, dynamic tumblers, and energetic dancers! Who could forget a visit from Santa Claus? He will want to visit with all the good girls and boys!



Register early for

### February Daddy Daughter Dance

This year's Daddy Daughter Dance promises to provide a perfect evening for dad and daughter to spend together dancing the night away to popular music provided by a DJ. The couples will also enjoy refreshments and have a photo taken to capture this moment in time. Come dressed in your best for the night of your life! Daddy Daughter Dance takes place February 19 from 6:30-8:30pm at the Johnston Recreation Center. Register early to reserve your couple's spot. Call the Park District at 529-3650 for more information or register online at [bloomingtondaleparks.org](http://bloomingtondaleparks.org).



### Dance Registration Begins

Registration begins December 6 for Ballet, Jazz, Tap, Funk, and more. Call 529-3650 for more information.

### Email Santa!

Santa is waiting to hear from children this Christmas! Children are invited to email Santa by going to the Bloomingtondale Park District website at [www.bloomingtondaleparks.org](http://www.bloomingtondaleparks.org) and clicking on "Send Email to Santa" on the home page. Hurry and email your letters because Santa will only take emails until December 15, so he can get ready for Christmas! For more information call the Park District at 529-3650.



Get in shape for the holidays with

### Adult Fitness at the Park District

Open Gym-available for ages 6-adult, call for schedules. Cost for adult open gym is \$4 per visit for residents, youth cost is \$2.

- Rec Basketball ..... Sundays 10:00-noon
- Co-Rec Volleyball. .... Thursdays 8:00-10:00pm
- Walking Track at Westfield ..... 7 days a week, call for times

### Gentle Yoga for Seniors

Enjoy a one-hour class of stretching, strengthening, and relaxing. We will use chairs and blankets for support in many poses. It will improve your posture, increase your mobility, and make you feel great! Choose from Mondays from 1:00-2:00pm, Jan. 3-Feb. 21, or Thursdays from 9:00-10:00am, Jan. 6-Feb. 24. Fee is \$60 per resident, \$65 per nonresident.

### Check out these Winter Break Camps!



December 20-31

Winter Break Days Off

Grades K-6, 8:30-3:30pm JRC R/NR Fee: varies

December 20-22, M, Tu, W

Holiday Gymnastics Camp

Grades K-8, 12:30-4:30pm JRC R/NR Fee: \$45/50

Reindeer Camp

Ages 2-1/2-5, 9:00am-1:00pm JRC R/NR Fee: \$45/50

December 27-31, M, Tu, W, Th, F

Basketball Camp

Ages 7-14, 12:30-3:30pm Westfield Gym R/NR Fee: \$70/80

Volleyball Camp

Ages 8-14, 9:00-11:30am Westfield Gym R/NR Fee: \$60/70

December 27-30, M, Tu, W, Th

Art Excellence Camp

Ages 7-13, 4:00-6:00pm Museum R/NR Fee: \$70/75

December 27-29, M, Tu, W

Reindeer Camp

Ages 2-1/2-5, 9:00-1:00pm JRC R/NR Fee: \$45/50

Holiday Gymnastics Camp

Grades 1-8, 12:30-4:30pm JRC R/NR Fee: \$45/50

Register for the above classes today!

### At the Museum...

#### NEW! Museum Senior Days

Seniors, please join us for FREE admission to our spectacular exhibits, as well as complimentary refreshments! This is the perfect opportunity to experience the Bloomingtondale Park District's spectacular art and culture events, while receiving a bit of Bloomingtondale history. The first Museum Senior Day is from 10am-Noon December 16 for the **Impressions of the Season** show. We hope to see you there!

Now-December 23

#### Impressions of the Season &

#### ...And a Partridge in a Pear Tree

Our annual holiday show features the theme of the Twelve Days of Christmas including a large collection of decorations & ornaments. In addition, Impressions of the Season is a juried mixed media show depicting holiday scenes.

#### Images and Imagination, A Juried Photo Show

January 22-February 26, 2005

Our very popular annual juried exhibition of photography will include work in black and white, color, and digital. This exciting show draws some of the finest photographers in the Midwest.

Bloomingtondale Park District Museum

108 South Bloomingtondale Rd. • Phone & Fax 630.539.3096  
Hours: Wed. 4-8pm; Thurs. & Fri. 10am-4pm; Sat. 12-4pm

## Bloomingtondale Park District

A Recipient of the Illinois Distinguished Agency Award

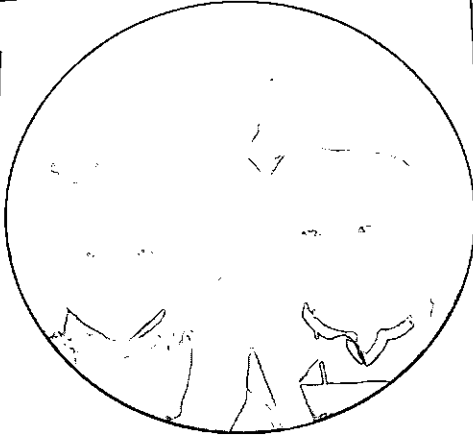
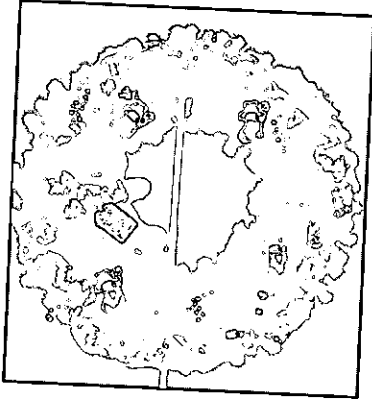
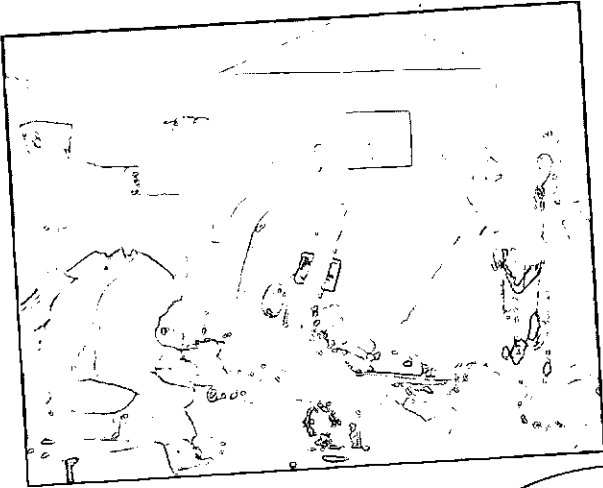
172 South Circle Avenue • Phone 630-529-3650

Office Hours: Monday - Thursday 8:30 am to 7:00 pm; Friday 8:30 am to 4:30 pm; Saturday 9:00 am to 1:00 pm  
visit us on the web at [www.bloomingtondaleparks.org](http://www.bloomingtondaleparks.org)

Village of Bloomingdale  
201 S. Bloomingdale Road  
Bloomingdale, Illinois 60108

PRESORTED  
STANDARD  
PAID  
Bloomingdale, IL  
60108  
Permit No.# 16

POSTAL PATRON LOCAL  
BLOOMINGDALE, ILLINOIS 60108



'Tis the  
the  
Season

